



Asbestos Register



PRELIMINARY INVESTIGATION

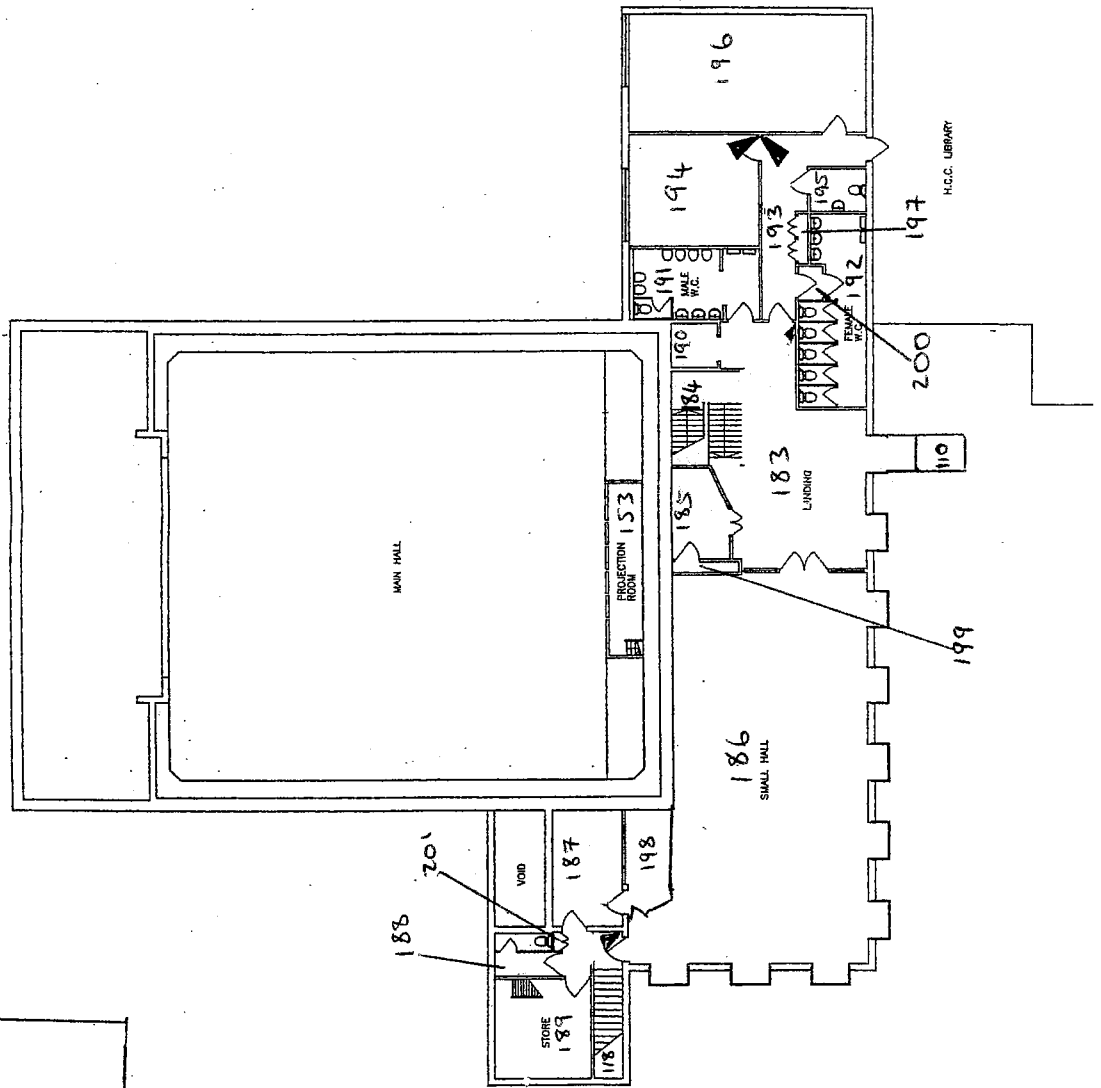
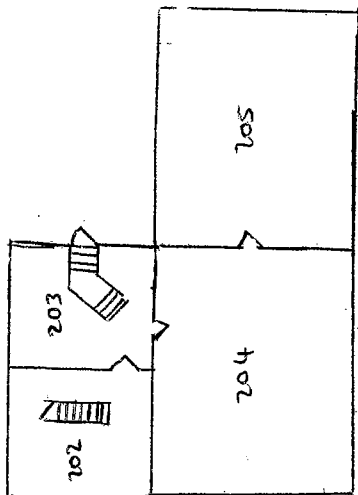
The information is being provided to you in order that you can bring it to the attention of all contractors, caretakers, maintenance operatives, etc, who need to undertake work on the buildings, so as they can take appropriate precautions when carrying out maintenance and construction work.

There is always a need for caution, as hidden parts of the structure may be disturbed by work, and if asbestos is present in such hidden parts, the preliminary survey will not have detected it.

It is our advice that if materials suspected of containing asbestos are to be worked on or likely to be disturbed by contractors, caretakers and maintenance operatives, etc, then a more comprehensive investigation must be made as part of the planning process before any work is undertaken.

We are instructing contractors, before undertaking any work or disturbing materials, to check the site copy of the material survey. Could you please ensure that this is made available.

Where you occupy a building(s) or any part of a site with others, please make sure that you keep each other informed and co-ordinate any work which may involve asbestos.

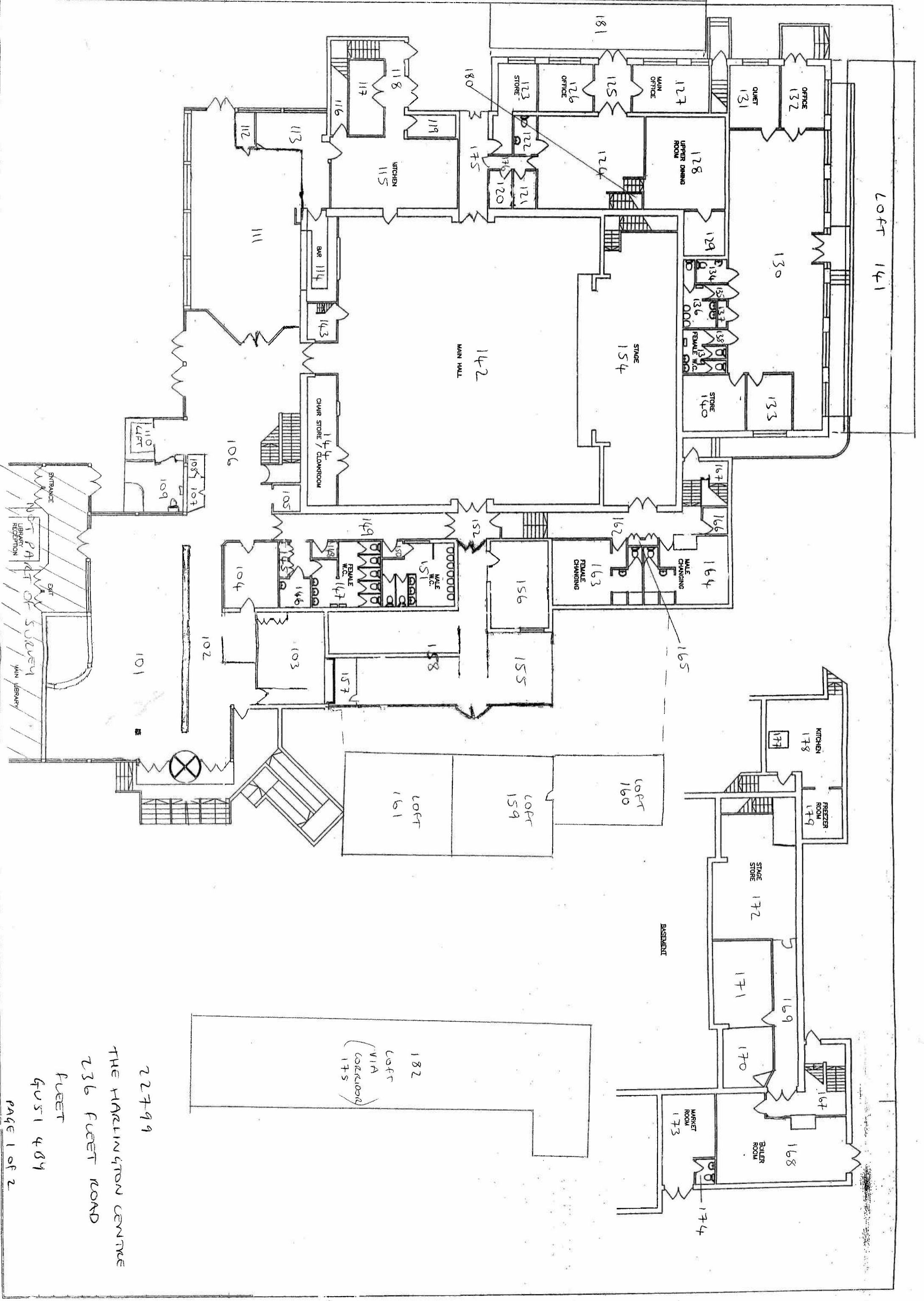


22799

THE MARLINGTON CENTRE

236 FLEET ROAD

FLEET
GU51 4BY



22799
 THE HARRINGTON CENTRE
 236 FEET ROAD
 FEET
 GUS 1 484
 PAGE 1 OF 2

Site: Non HCC Properties **Unit:** THE HARLINGTON CENTRE

Reference: 10008999999 **Unit Reference:** -419054012 **Building No.:**

This register is a list of the asbestos we have found to date in the accessible areas of this building and is designed to inform those undertaking routine maintenance. It normally excludes ducts (floors and walls), floor tiles, hidden floor coverings, ceiling voids, textured coatings (Artex), putty to windows etc. If you are undertaking refurbishment works or works in areas we have not yet accessed or any area that is not specifically mentioned, you must request a survey through Property Services beforehand. See Manager's Guide for more information. If an area is marked that Access is Restricted, do not enter

| Room Title | Rm No. | Position | Details | Material Inspected | Asbestos | Access Restricted? |
|---------------------------|--------|-------------------|---|--------------------|----------------|--------------------|
| Location: Internal | | | | | | |
| CAFÉ | 101 | Above Ceiling | Within vent trunking | Not Accessed | DO NOT DISTURB | |
| CAFÉ | 101 | Above Ceiling | Roof felt above rafters to entrance porch | Bitumen Product | NOT DETECTED | |
| CAFÉ | 101 | Above Ceiling | Beneath insulation to pipework | Not Accessed | DO NOT DISTURB | |
| CAFÉ | 101 | Above Ceiling | Lining to library wall above high level kitchen units | Bitumen Product | NOT DETECTED | |
| CAFÉ | 101 | Above Ceiling | Coating to columns | Bitumen Product | NOT DETECTED | |
| CAFÉ | 101 | Inside Boxing | Beneath and behind fixed kitchen units | Not Accessed | DO NOT DISTURB | |
| CAFÉ | 101 | Inside Boxing | Vertical to corner of kitchen and adjacent external door | Not Accessed | DO NOT DISTURB | |
| CAFÉ | 101 | Inside Boxing | Above and below display cabinet | Not Accessed | DO NOT DISTURB | |
| CAFÉ | 101 | Floor Duct | | Not Accessed | DO NOT DISTURB | |
| CAFÉ | 101 | Heater | Within - low level beneath windows and within wall behind refrigerators | Not Accessed | DO NOT DISTURB | |
| CAFÉ | 101 | Under Carpet/Lino | | Not Accessed | DO NOT DISTURB | |
| CAFÉ | 101 | Other Surfaces | | Not Detected | NOT DETECTED | |
| MAIN ENTRANCE | 102 | Above Ceiling | Roof felt above rafters to entrance porch | Bitumen Product | NOT DETECTED | |
| MAIN ENTRANCE | 102 | Above Ceiling | Lining to top of ceiling slab recessed in ducts | Paper | NOT DETECTED | |
| MAIN ENTRANCE | 102 | Above Ceiling | Coating to columns | Bitumen Product | NOT DETECTED | |
| MAIN ENTRANCE | 102 | Above Ceiling | Beneath insulation to pipework | Not Accessed | DO NOT DISTURB | |
| MAIN ENTRANCE | 102 | Blanking Board | Behind hessian panel | Not Accessed | DO NOT DISTURB | |

"Do not Disturb" - asbestos containing materials are present / suspected to be present. "Not Detected" - material does not contain asbestos.



Site:

Non HCC Properties

Unit:

THE HARLINGTON CENTRE

Reference:

10008999999

Unit Reference:

-419054012

Building No.:

This register is a list of the asbestos we have found to date in the accessible areas of this building and is designed to inform those undertaking routine maintenance. It normally excludes ducts (floors and walls), floor tiles, hidden floor coverings, ceiling voids, textured coatings (Artex), putty to windows etc. If you are undertaking refurbishment works or works in areas we have not yet accessed or any area that is not specifically mentioned, you must request a survey through Property Services beforehand. See Manager's Guide for more information. If an area is marked that Access is Restricted, do not enter

| Room Title | Rm No. | Position | Details | Material Inspected | Asbestos | Access Restricted? |
|----------------------|--------|-------------------|---------------------------------|--------------------|----------------|--------------------|
| MAIN ENTRANCE | 102 | Inside Boxing | Vertical | Not Accessed | DO NOT DISTURB | |
| MAIN ENTRANCE | 102 | Inside Boxing | Above and below display cabinet | Not Accessed | DO NOT DISTURB | |
| MAIN ENTRANCE | 102 | Under Carpet/Lino | | Not Accessed | DO NOT DISTURB | |
| MAIN ENTRANCE | 102 | Other Surfaces | | Not Detected | NOT DETECTED | |
| CHIROPRACTOR OFFICE | 103 | Above Ceiling | Beneath insulation to pipework | Not Accessed | DO NOT DISTURB | |
| CHIROPRACTOR OFFICE | 103 | Inside Boxing | Vertical and low level | Not Accessed | DO NOT DISTURB | |
| CHIROPRACTOR OFFICE | 103 | Under Carpet/Lino | | Not Accessed | DO NOT DISTURB | |
| CHIROPRACTOR OFFICE | 103 | Other Surfaces | | Not Detected | NOT DETECTED | |
| PLAY AREA | 104 | Above Ceiling | Beneath insulation to pipework | Not Accessed | DO NOT DISTURB | |
| PLAY AREA | 104 | Inside Boxing | High level | Not Accessed | DO NOT DISTURB | |
| PLAY AREA | 104 | Under Carpet/Lino | Paper | Not Detected | NOT DETECTED | |
| PLAY AREA | 104 | Other Surfaces | | Not Detected | NOT DETECTED | |
| STORE | 105 | Under Carpet/Lino | | Not Accessed | DO NOT DISTURB | |
| STORE | 105 | Other Surfaces | | Not Detected | NOT DETECTED | |
| LOBBY | 106 | Above Ceiling | Beneath insulation to pipework | Not Accessed | DO NOT DISTURB | |
| LOBBY | 106 | Floor Duct | | Not Accessed | DO NOT DISTURB | |
| LOBBY | 106 | Heater | Within wall x2 | Not Accessed | DO NOT DISTURB | |
| LOBBY | 106 | Under Carpet/Lino | | Not Accessed | DO NOT DISTURB | |
| LOBBY | 106 | Other Surfaces | | Not Detected | NOT DETECTED | |
| RISER/ELECTRIC STORE | 107 | Electrical Box | Modern x2 | Not Detected | NOT DETECTED | |

"Do not Disturb" - asbestos containing materials are present / suspected to be present.

"Not Detected" - material does not contain asbestos.



Site: Non HCC Properties **Unit:** THE HARLINGTON CENTRE

Reference: 10008999999 **Unit Reference:** -419054012 **Building No.:** []

This register is a list of the asbestos we have found to date in the accessible areas of this building and is designed to inform those undertaking routine maintenance. It normally excludes ducts (floors and walls), floor tiles, hidden floor coverings, ceiling voids, textured coatings (Artex), putty to windows etc. If you are undertaking refurbishment works or works in areas we have not yet accessed or any area that is not specifically mentioned, you must request a survey through Property Services beforehand. See Manager's Guide for more information. If an area is marked that Access is Restricted, do not enter

| Room Title | Rm No. | Position | Details | Material Inspected | Asbestos | Access Restricted? |
|----------------------|--------|---------------------|------------------------------------|--------------------|----------------|--------------------|
| RISER/ELECTRIC STORE | 107 | Pipework | Beneath insulation | Not Accessed | DO NOT DISTURB | |
| RISER/ELECTRIC STORE | 107 | Under Carpet/Lino | | Not Accessed | DO NOT DISTURB | |
| RISER/ELECTRIC STORE | 107 | Wall | Adjacent area 109 | Textured Coating | NOT DETECTED | |
| RISER/ELECTRIC STORE | 107 | Water Heater | Modern | Not Detected | NOT DETECTED | |
| RISER/ELECTRIC STORE | 107 | Other Surfaces | | Not Detected | NOT DETECTED | |
| STORE | 108 | Machinery | For lift - modern | Not Detected | NOT DETECTED | |
| STORE | 108 | Under Carpet/Lino | | Not Accessed | DO NOT DISTURB | |
| STORE | 108 | Other Surfaces | | Not Detected | NOT DETECTED | |
| ACCESSIBLE TOILET | 109 | Boxing | Behind tiles | Not Accessed | DO NOT DISTURB | |
| ACCESSIBLE TOILET | 109 | Under Carpet/Lino | | Not Accessed | DO NOT DISTURB | |
| ACCESSIBLE TOILET | 109 | Wall | Behind tiles | Not Accessed | DO NOT DISTURB | |
| ACCESSIBLE TOILET | 109 | Other Surfaces | | Not Accessed | DO NOT DISTURB | |
| LIFT | 110 | Accessible Surfaces | Car and shaft | Not Detected | NOT DETECTED | |
| FUNCTION ROOM | 111 | Above Ceiling | Beneath insulation to pipework | Not Accessed | DO NOT DISTURB | |
| FUNCTION ROOM | 111 | Above Windows | | Not Detected | NOT DETECTED | |
| FUNCTION ROOM | 111 | Inside Boxing | Vertical adjacent bar 113 | Not Accessed | DO NOT DISTURB | |
| FUNCTION ROOM | 111 | Inside Boxing | Beneath bar | Not Accessed | DO NOT DISTURB | |
| FUNCTION ROOM | 111 | Inside Boxing | Vertical to windows | Not Accessed | DO NOT DISTURB | |
| FUNCTION ROOM | 111 | Cladding | Wall to area 112 adjacent area 113 | Fibre Cement | NOT DETECTED | |
| FUNCTION ROOM | 111 | Heater | Within wall | Not Accessed | DO NOT DISTURB | |

"Do not Disturb" - asbestos containing materials are present / suspected to be present.

"Not Detected" - material does not contain asbestos.



| | | | |
|-------------------|--------------------|------------------------|-----------------------|
| Site: | Non HCC Properties | Unit: | THE HARLINGTON CENTRE |
| Reference: | 10008999999 | Unit Reference: | -419054012 |
| | | Building No.: | |

This register is a list of the asbestos we have found to date in the accessible areas of this building and is designed to inform those undertaking routine maintenance. It normally excludes ducts (floors and walls), floor tiles, hidden floor coverings, ceiling voids, textured coatings (Artex), putty to windows etc. If you are undertaking refurbishment works or works in areas we have not yet accessed or any area that is not specifically mentioned, you must request a survey through Property Services beforehand. See Manager's Guide for more information. If an area is marked that Access is Restricted, do not enter

| Room Title | Rm No. | Position | Details | Material Inspected | Asbestos | Access Restricted? |
|---------------|--------|-------------------|--------------------------------|--------------------|----------------|--------------------|
| FUNCTION ROOM | 111 | Under Carpet/Lino | | Not Accessed | DO NOT DISTURB | |
| FUNCTION ROOM | 111 | Other Surfaces | | Not Detected | NOT DETECTED | |
| STORE | 112 | Above Ceiling | | Not Detected | NOT DETECTED | |
| STORE | 112 | Under Carpet/Lino | | Not Accessed | DO NOT DISTURB | |
| STORE | 112 | Other Surfaces | | Not Detected | NOT DETECTED | |
| BAR | 113 | Above Ceiling | Beneath insulation to pipework | Not Accessed | DO NOT DISTURB | |
| BAR | 113 | Above Ceiling | Within boxings - various | Not Accessed | DO NOT DISTURB | |
| BAR | 113 | Inside Boxing | Beneath and behind fixed units | Not Accessed | DO NOT DISTURB | |
| BAR | 113 | Inside Boxing | Vertical - various | Not Accessed | DO NOT DISTURB | |
| BAR | 113 | Inside Boxing | Beneath bar | Not Accessed | DO NOT DISTURB | |
| BAR | 113 | Cladding | Wall to area 112 | Fibre Cement | NOT DETECTED | |
| BAR | 113 | Floor Duct | | Not Accessed | DO NOT DISTURB | |
| BAR | 113 | Under Carpet/Lino | | Not Accessed | DO NOT DISTURB | |
| BAR | 113 | Under Sink | Pads x2 | Bitumen Product | NOT DETECTED | |
| BAR | 113 | Wall | Behind tiles | Not Accessed | DO NOT DISTURB | |
| BAR | 113 | Other Surfaces | | Not Detected | NOT DETECTED | |
| BAR | 114 | Inside Boxing | Vertical | Not Accessed | DO NOT DISTURB | |
| BAR | 114 | Inside Boxing | Beneath fixed units | Not Accessed | DO NOT DISTURB | |
| BAR | 114 | Fixed Ceiling | | Textured Coating | NOT DETECTED | |
| BAR | 114 | Under Carpet/Lino | | Not Accessed | DO NOT DISTURB | |

"Do not Disturb" - asbestos containing materials are present / suspected to be present. "Not Detected" - material does not contain asbestos.



Site: Non HCC Properties **Unit:** THE HARLINGTON CENTRE

Reference: 10008999999 **Unit Reference:** -419054012 **Building No:**

This register is a list of the asbestos we have found to date in the accessible areas of this building and is designed to inform those undertaking routine maintenance. It normally excludes ducts (floors and walls), floor tiles, hidden floor coverings, ceiling voids, textured coatings (Artex), putty to windows etc. If you are undertaking refurbishment works or works in areas we have not yet accessed or any area that is not specifically mentioned, you must request a survey through Property Services beforehand. See Manager's Guide for more information. If an area is marked that Access is Restricted, do not enter

| Room Title | Rm No. | Position | Details | Material Inspected | Asbestos | Access Restricted? |
|---------------------|--------|-------------------|---|--------------------|----------------|--------------------|
| BAR | 114 | Under Sink | Pads x2 | Bitumen Product | NOT DETECTED | |
| BAR | 114 | Other Surfaces | | Not Detected | NOT DETECTED | |
| KITCHEN | 115 | Above Ceiling | Beneath insulation to pipework | Not Accessed | DO NOT DISTURB | |
| KITCHEN | 115 | Above Ceiling | Within vent trunking | Not Accessed | DO NOT DISTURB | |
| KITCHEN | 115 | Above Ceiling | Within pipe exits | Not Accessed | DO NOT DISTURB | |
| KITCHEN | 115 | Above Ceiling | Within boxings | Not Accessed | DO NOT DISTURB | |
| KITCHEN | 115 | Above Ceiling | Extractor including surrounding vents | Not Accessed | DO NOT DISTURB | |
| KITCHEN | 115 | Cooker | Deep fat fryer - board within to rear of fryer | Insulating Board | DO NOT DISTURB | |
| KITCHEN | 115 | Electrical Box | Various | Not Detected | NOT DETECTED | |
| KITCHEN | 115 | Gasket | To pipework flange behind cookers and fryer - inaccessible for inspection | Not Accessed | DO NOT DISTURB | |
| KITCHEN | 115 | Light Fitting | Sealant to glazing x3 within extractor canopy | Putty | NOT DETECTED | |
| KITCHEN | 115 | Under Carpet/Lino | | Not Accessed | DO NOT DISTURB | |
| KITCHEN | 115 | Under Sink | Paint to sinks and drainers | Bitumen Product | NOT DETECTED | |
| KITCHEN | 115 | Wall | Behind cladding | Not Accessed | DO NOT DISTURB | |
| KITCHEN | 115 | Other Surfaces | | Not Detected | NOT DETECTED | |
| ELECTRICAL CUPBOARD | 116 | Electrical Box | Various | Not Accessed | DO NOT DISTURB | |
| ELECTRICAL CUPBOARD | 116 | Electric Cable | Remnants of wrap to main intake | Textiles | NOT DETECTED | |
| ELECTRICAL CUPBOARD | 116 | Trunking | Within | Not Accessed | DO NOT DISTURB | |
| ELECTRICAL CUPBOARD | 116 | Other Surfaces | | Not Detected | NOT DETECTED | |
| BAR STORE | 117 | Above Ceiling | Coating to ceiling | Bitumen Product | NOT DETECTED | |

"Do not Disturb" - asbestos containing materials are present / suspected to be present. "Not Detected" - material does not contain asbestos.



| | | | |
|-------------------|--------------------|------------------------|-----------------------|
| Site: | Non HCC Properties | Unit: | THE HARLINGTON CENTRE |
| Reference: | 10008999999 | Unit Reference: | -419054012 |
| | | Building No.: | |

This register is a list of the asbestos we have found to date in the accessible areas of this building and is designed to inform those undertaking routine maintenance. It normally excludes ducts (floors and walls), floor tiles, hidden floor coverings, ceiling voids, textured coatings (Artex), putty to windows etc. If you are undertaking refurbishment works or works in areas we have not yet accessed or any area that is not specifically mentioned, you must request a survey through Property Services beforehand. See Manager's Guide for more information. If an area is marked that Access is Restricted, do not enter

| Room Title | Rm No. | Position | Details | Material Inspected | Asbestos | Access Restricted? |
|--------------|--------|-------------------|----------------------|--------------------|----------------|--------------------|
| BAR STORE | 117 | Other Surfaces | | Not Detected | NOT DETECTED | |
| STAIRS/LOBBY | 118 | Above Ceiling | Coating to ceiling | Bitumen Product | NOT DETECTED | |
| STAIRS/LOBBY | 118 | Floor Adhesive | | Bitumen Product | DO NOT DISTURB | |
| STAIRS/LOBBY | 118 | Floor Tiles | Beige | Vinyl Flooring | DO NOT DISTURB | |
| STAIRS/LOBBY | 118 | Stair Nosings | | Plastics | NOT DETECTED | |
| STAIRS/LOBBY | 118 | Under Carpet/Lino | Beneath lino | Not Accessed | DO NOT DISTURB | |
| STAIRS/LOBBY | 118 | Wall | | Textured Coating | NOT DETECTED | |
| STAIRS/LOBBY | 118 | Other Surfaces | | Not Detected | NOT DETECTED | |
| STORE | 119 | Above Ceiling | Within vent trunking | Not Accessed | DO NOT DISTURB | |
| STORE | 119 | Above Ceiling | Coating to ceiling | Textured Coating | NOT DETECTED | |
| STORE | 119 | Above Ceiling | Coating to walls | Textured Coating | NOT DETECTED | |
| STORE | 119 | Pipework | Beneath insulation | Not Accessed | DO NOT DISTURB | |
| STORE | 119 | Under Carpet/Lino | | Not Accessed | DO NOT DISTURB | |
| STORE | 119 | Wall | | Textured Coating | NOT DETECTED | |
| STORE | 119 | Other Surfaces | | Not Detected | NOT DETECTED | |
| STORE | 120 | Fixed Ceiling | | Textured Coating | NOT DETECTED | |
| STORE | 120 | Lino | Modern | Not Detected | NOT DETECTED | |
| STORE | 120 | Pipework | Beneath insulation | Not Accessed | DO NOT DISTURB | |
| STORE | 120 | Under Carpet/Lino | | Not Accessed | DO NOT DISTURB | |
| STORE | 120 | Wall | | Textured Coating | NOT DETECTED | |

"Do not Disturb" - asbestos containing materials are present / suspected to be present. "Not Detected" - material does not contain asbestos.



Site:

Non HCC Properties

Unit:

THE HARLINGTON CENTRE

Reference:

10008999999

Unit Reference:

-419054012

Building No:

This register is a list of the asbestos we have found to date in the accessible areas of this building and is designed to inform those undertaking routine maintenance. It normally excludes ducts (floors and walls), floor tiles, hidden floor coverings, ceiling voids, textured coatings (Artex), putty to windows etc. If you are undertaking refurbishment works or works in areas we have not yet accessed or any area that is not specifically mentioned, you must request a survey through Property Services beforehand. See Manager's Guide for more information. If an area is marked that Access is Restricted, do not enter

| Room Title | Rm No. | Position | Details | Material Inspected | Asbestos | Access Restricted? |
|-------------------|--------|-------------------|----------------------------------|--------------------|----------------|--------------------|
| STORE | 120 | Water Heater | Modern | Not Detected | NOT DETECTED | |
| STORE | 120 | Other Surfaces | | Not Detected | NOT DETECTED | |
| FEMALE TOILET | 121 | Above Ceiling | Coating to ceiling | Textured Coating | NOT DETECTED | |
| FEMALE TOILET | 121 | Above Ceiling | Coating to walls | Textured Coating | NOT DETECTED | |
| FEMALE TOILET | 121 | Inside Boxing | Low level | Not Accessed | DO NOT DISTURB | |
| FEMALE TOILET | 121 | Under Carpet/Lino | | Not Accessed | DO NOT DISTURB | |
| FEMALE TOILET | 121 | Other Surfaces | | Not Detected | NOT DETECTED | |
| ACCESSIBLE TOILET | 122 | Above Ceiling | Beneath insulation to pipework | Not Detected | NOT DETECTED | |
| ACCESSIBLE TOILET | 122 | Above Ceiling | Coating to ceiling | Textured Coating | NOT DETECTED | |
| ACCESSIBLE TOILET | 122 | Floor Duct | | Not Accessed | DO NOT DISTURB | |
| ACCESSIBLE TOILET | 122 | Under Carpet/Lino | | Not Accessed | DO NOT DISTURB | |
| ACCESSIBLE TOILET | 122 | Water Heater | | Not Detected | NOT DETECTED | |
| ACCESSIBLE TOILET | 122 | Other Surfaces | Modern | Not Detected | NOT DETECTED | |
| STORE | 123 | Fixed Ceiling | On plasterboard | Textured Coating | NOT DETECTED | |
| STORE | 123 | Floor Tiles | Red - modern | Not Detected | NOT DETECTED | |
| STORE | 123 | Pipe (High Lev) | Beneath mineral fibre insulation | Not Accessed | DO NOT DISTURB | |
| STORE | 123 | Under Carpet/Lino | Beneath floor tiles | Not Accessed | DO NOT DISTURB | |
| STORE | 123 | Other Surfaces | | Not Detected | NOT DETECTED | |
| FUNCTION ROOM | 124 | Above Ceiling | Above fixed ceiling | Not Accessed | DO NOT DISTURB | |
| FUNCTION ROOM | 124 | Inside Boxing | Above electrical boxes | Not Accessed | DO NOT DISTURB | |

"Do not Disturb" - asbestos containing materials are present / suspected to be present.

"Not Detected" - material does not contain asbestos.



Site: Non HCC Properties **Unit:** THE HARLINGTON CENTRE
Reference: 10008999999 **Unit Reference:** -419054012 **Building No.:** []

This register is a list of the asbestos we have found to date in the accessible areas of this building and is designed to inform those undertaking routine maintenance. It normally excludes ducts (floors and walls), floor tiles, hidden floor coverings, ceiling voids, textured coatings (Artex), putty to windows etc. If you are undertaking refurbishment works or works in areas we have not yet accessed or any area that is not specifically mentioned, you must request a survey through Property Services beforehand. See Manager's Guide for more information. If an area is marked that Access is Restricted, do not enter

| Room Title | Rm No. | Position | Details | Material Inspected | Asbestos | Access Restricted? |
|----------------|--------|-------------------|--------------------------|--------------------|----------------|--------------------|
| FUNCTION ROOM | 124 | Inside Boxing | Vertical | Not Accessed | DO NOT DISTURB | |
| FUNCTION ROOM | 124 | Electrical Box | Modern | Not Detected | NOT DETECTED | |
| FUNCTION ROOM | 124 | Floor Tiles | Pink - modern to stairs | Not Detected | NOT DETECTED | |
| FUNCTION ROOM | 124 | Heater | Modern | Not Detected | NOT DETECTED | |
| FUNCTION ROOM | 124 | Under Carpet/Lino | | Not Accessed | DO NOT DISTURB | |
| FUNCTION ROOM | 124 | Other Surfaces | | Not Detected | NOT DETECTED | |
| ENTRANCE LOBBY | 125 | Fixed Ceiling | | Textured Coating | NOT DETECTED | |
| ENTRANCE LOBBY | 125 | Floor Tiles | Pink - modern | Not Detected | NOT DETECTED | |
| ENTRANCE LOBBY | 125 | Heater | Modern | Not Detected | NOT DETECTED | |
| ENTRANCE LOBBY | 125 | Under Carpet/Lino | | Not Accessed | DO NOT DISTURB | |
| ENTRANCE LOBBY | 125 | Other Surfaces | | Not Detected | NOT DETECTED | |
| OFFICE | 126 | Fixed Ceiling | On plasterboard | Textured Coating | NOT DETECTED | |
| OFFICE | 126 | Heater | Modern | Not Detected | NOT DETECTED | |
| OFFICE | 126 | Under Carpet/Lino | Red floor tiles - modern | Not Detected | NOT DETECTED | |
| OFFICE | 126 | Other Surfaces | | Not Detected | NOT DETECTED | |
| OFFICE | 127 | Fixed Ceiling | | Textured Coating | NOT DETECTED | |
| OFFICE | 127 | Heater | Modern | Not Detected | NOT DETECTED | |
| OFFICE | 127 | Under Carpet/Lino | | Not Accessed | DO NOT DISTURB | |
| OFFICE | 127 | Other Surfaces | | Not Detected | NOT DETECTED | |
| DINING ROOM | 128 | Above Ceiling | Above fixed ceiling | Not Accessed | DO NOT DISTURB | |

"Do not Disturb" - asbestos containing materials are present / suspected to be present. "Not Detected" - material does not contain asbestos.



Site: Non HCC Properties **Unit:** THE HARLINGTON CENTRE

Reference: 10008999999 **Unit Reference:** -419054012 **Building No:** []

This register is a list of the asbestos we have found to date in the accessible areas of this building and is designed to inform those undertaking routine maintenance. It normally excludes ducts (floors and walls), floor tiles, hidden floor coverings, ceiling voids, textured coatings (Artex), putty to windows etc. If you are undertaking refurbishment works or works in areas we have not yet accessed or any area that is not specifically mentioned, you must request a survey through Property Services beforehand. See Manager's Guide for more information. If an area is marked that Access is Restricted, do not enter

| Room Title | Rm No. | Position | Details | Material Inspected | Asbestos | Access Restricted? |
|--------------|--------|-------------------|--------------------------|--------------------|----------------|--------------------|
| DINING ROOM | 128 | Above Ceiling | Electrical box - modern | Not Detected | NOT DETECTED | |
| DINING ROOM | 128 | Above Ceiling | Within vent trunking | Not Accessed | DO NOT DISTURB | |
| DINING ROOM | 128 | Inside Boxing | Various | Not Accessed | DO NOT DISTURB | |
| DINING ROOM | 128 | Heater | Modern | Not Detected | NOT DETECTED | |
| DINING ROOM | 128 | Under Carpet/Lino | | Not Accessed | DO NOT DISTURB | |
| DINING ROOM | 128 | Other Surfaces | | Not Detected | NOT DETECTED | |
| STORE | 129 | Above Ceiling | Above fixed ceiling | Not Accessed | DO NOT DISTURB | |
| STORE | 129 | Above Ceiling | Within vent trunking | Not Accessed | DO NOT DISTURB | |
| STORE | 129 | Inside Boxing | | Not Accessed | DO NOT DISTURB | |
| STORE | 129 | Under Carpet/Lino | | Not Accessed | DO NOT DISTURB | |
| STORE | 129 | Other Surfaces | | Not Detected | NOT DETECTED | |
| YOUTH CENTRE | 130 | Fixed Ceiling | | Textured Coating | NOT DETECTED | |
| YOUTH CENTRE | 130 | Floor Tiles | Grey - modern | Not Detected | NOT DETECTED | |
| YOUTH CENTRE | 130 | Heater | Wall mounted - modern | Not Detected | NOT DETECTED | |
| YOUTH CENTRE | 130 | Lino | To kitchen area - modern | Not Detected | NOT DETECTED | |
| YOUTH CENTRE | 130 | Under Carpet/Lino | Clear adhesive | Not Detected | NOT DETECTED | |
| YOUTH CENTRE | 130 | Under Sink | Pad - modern | Not Detected | NOT DETECTED | |
| YOUTH CENTRE | 130 | Other Surfaces | | Not Detected | NOT DETECTED | |
| OFFICE | 131 | Fixed Ceiling | | Textured Coating | NOT DETECTED | |
| OFFICE | 131 | Floor Tiles | Grey - modern | Not Detected | NOT DETECTED | |

"Do not Disturb" - asbestos containing materials are present / suspected to be present. "Not Detected" - material does not contain asbestos.



Site: Non HCC Properties **Unit:** THE HARLINGTON CENTRE

Reference: 10008999999 **Unit Reference:** -419054012 **Building No:**

This register is a list of the asbestos we have found to date in the accessible areas of this building and is designed to inform those undertaking routine maintenance. It normally excludes ducts (floors and walls), floor tiles, hidden floor coverings, ceiling voids, textured coatings (Artex), putty to windows etc. If you are undertaking refurbishment works or works in areas we have not yet accessed or any area that is not specifically mentioned, you must request a survey through Property Services beforehand. See Manager's Guide for more information. If an area is marked that Access is Restricted, do not enter

| Room Title | Rm No. | Position | Details | Material Inspected | Asbestos | Access Restricted? |
|-------------------|--------|-------------------|-----------------------|--------------------|----------------|--------------------|
| OFFICE | 131 | Heater | Wall mounted - modern | Not Detected | NOT DETECTED | |
| OFFICE | 131 | Under Carpet/Lino | Clear adhesive | Not Detected | NOT DETECTED | |
| OFFICE | 131 | Other Surfaces | | Not Detected | NOT DETECTED | |
| OFFICE | 132 | Fixed Ceiling | | Textured Coating | NOT DETECTED | |
| OFFICE | 132 | Heater | Wall mounted - modern | Not Detected | NOT DETECTED | |
| OFFICE | 132 | Under Carpet/Lino | | Not Detected | NOT DETECTED | |
| OFFICE | 132 | Other Surfaces | | Not Detected | NOT DETECTED | |
| SITTING ROOM | 133 | Fixed Ceiling | | Textured Coating | NOT DETECTED | |
| SITTING ROOM | 133 | Heater | Wall mounted - modern | Not Detected | NOT DETECTED | |
| SITTING ROOM | 133 | Under Carpet/Lino | Modern lino | Not Detected | NOT DETECTED | |
| SITTING ROOM | 133 | Other Surfaces | | Not Detected | NOT DETECTED | |
| ACCESSIBLE TOILET | 134 | Inside Boxing | | Not Accessed | DO NOT DISTURB | |
| ACCESSIBLE TOILET | 134 | Fixed Ceiling | | Textured Coating | NOT DETECTED | |
| ACCESSIBLE TOILET | 134 | Heater | Wall mounted - modern | Not Detected | NOT DETECTED | |
| ACCESSIBLE TOILET | 134 | Lino | Modern | Not Detected | NOT DETECTED | |
| ACCESSIBLE TOILET | 134 | Under Carpet/Lino | | Not Detected | NOT DETECTED | |
| ACCESSIBLE TOILET | 134 | Water Heater | Modern | Not Detected | NOT DETECTED | |
| ACCESSIBLE TOILET | 134 | Other Surfaces | | Not Detected | NOT DETECTED | |
| TOILET LOBBY | 135 | Fixed Ceiling | | Textured Coating | NOT DETECTED | |
| TOILET LOBBY | 135 | Lino | Modern | Not Detected | NOT DETECTED | |

"Do not Disturb" - asbestos containing materials are present / suspected to be present. "Not Detected" - material does not contain asbestos.



Site: Non HCC Properties **Unit:** THE HARLINGTON CENTRE

Reference: 10008999999 **Unit Reference:** -419054012 **Building No:** []

This register is a list of the asbestos we have found to date in the accessible areas of this building and is designed to inform those undertaking routine maintenance. It normally excludes ducts (floors and walls), floor tiles, hidden floor coverings, ceiling voids, textured coatings (Artex), putty to windows etc. If you are undertaking refurbishment works or works in areas we have not yet accessed or any area that is not specifically mentioned, you must request a survey through Property Services beforehand. See Manager's Guide for more information. If an area is marked that Access is Restricted, do not enter

| Room Title | Rm No. | Position | Details | Material Inspected | Asbestos | Access Restricted? |
|---------------|--------|-------------------|-----------------------|--------------------|----------------|--------------------|
| TOILET LOBBY | 135 | Under Carpet/Lino | | Not Detected | NOT DETECTED | |
| TOILET LOBBY | 135 | Other Surfaces | | Not Detected | NOT DETECTED | |
| MALE TOILETS | 136 | Fixed Ceiling | | Textured Coating | NOT DETECTED | |
| MALE TOILETS | 136 | Heater | Wall mounted - modern | Not Detected | NOT DETECTED | |
| MALE TOILETS | 136 | Lino | Modern | Not Detected | NOT DETECTED | |
| MALE TOILETS | 136 | Under Carpet/Lino | | Not Detected | NOT DETECTED | |
| MALE TOILETS | 136 | Other Surfaces | | Not Detected | NOT DETECTED | |
| STORE | 137 | Fixed Ceiling | | Textured Coating | NOT DETECTED | |
| STORE | 137 | Lino | Modern | Not Detected | NOT DETECTED | |
| STORE | 137 | Under Carpet/Lino | | Not Detected | NOT DETECTED | |
| STORE | 137 | Water Heater | Modern | Not Detected | NOT DETECTED | |
| STORE | 137 | Other Surfaces | | Not Detected | NOT DETECTED | |
| TOILET LOBBY | 138 | Fixed Ceiling | | Textured Coating | NOT DETECTED | |
| TOILET LOBBY | 138 | Lino | Modern | Not Detected | NOT DETECTED | |
| TOILET LOBBY | 138 | Under Carpet/Lino | | Not Detected | NOT DETECTED | |
| TOILET LOBBY | 138 | Other Surfaces | | Not Detected | NOT DETECTED | |
| FEMALE TOILET | 139 | Fixed Ceiling | | Textured Coating | NOT DETECTED | |
| FEMALE TOILET | 139 | Floor Duct | | Not Accessed | DO NOT DISTURB | |
| FEMALE TOILET | 139 | Heater | Wall mounted - modern | Not Detected | NOT DETECTED | |
| FEMALE TOILET | 139 | Lino | Modern | Not Detected | NOT DETECTED | |

"Do not Disturb" - asbestos containing materials are present / suspected to be present. "Not Detected" - material does not contain asbestos.

Site: Non HCC Properties **Unit:** THE HARLINGTON CENTRE
Reference: 10008999999 **Unit Reference:** -419054012 **Building No.:** []

This register is a list of the asbestos we have found to date in the accessible areas of this building and is designed to inform those undertaking routine maintenance. It normally excludes ducts (floors and walls), floor tiles, hidden floor coverings, ceiling voids, textured coatings (Artex), putty to windows etc. If you are undertaking refurbishment works or works in areas we have not yet accessed or any area that is not specifically mentioned, you must request a survey through Property Services beforehand. See Manager's Guide for more information. If an area is marked that Access is Restricted, do not enter

| Room Title | Rm No. | Position | Details | Material Inspected | Asbestos | Access Restricted? |
|----------------------|--------|-------------------|---|--------------------|----------------|--------------------|
| FEMALE TOILET | 139 | Under Carpet/Lino | | Not Detected | NOT DETECTED | |
| FEMALE TOILET | 139 | Other Surfaces | | Not Detected | NOT DETECTED | |
| ELECTRICAL STORE | 140 | Fixed Ceiling | | Textured Coating | NOT DETECTED | |
| ELECTRICAL STORE | 140 | Electrical Box | Modern x3 | Not Detected | NOT DETECTED | |
| ELECTRICAL STORE | 140 | Floor Tiles | Grey - modern | Not Detected | NOT DETECTED | |
| ELECTRICAL STORE | 140 | Under Carpet/Lino | Clear adhesive | Not Detected | NOT DETECTED | |
| ELECTRICAL STORE | 140 | Other Surfaces | | Not Detected | NOT DETECTED | |
| LOFT ABOVE THE POINT | 141 | Above Ceiling | Above roof felt | Not Accessed | DO NOT DISTURB | |
| LOFT ABOVE THE POINT | 141 | Eaves Soffit | No access due to mineral fibre insulation | Not Accessed | DO NOT DISTURB | |
| LOFT ABOVE THE POINT | 141 | Roof Felt | To roof and walls | Bitumen Product | NOT DETECTED | |
| LOFT ABOVE THE POINT | 141 | Wall | Behind mineral fibre insulation | Not Accessed | DO NOT DISTURB | |
| LOFT ABOVE THE POINT | 141 | Other Surfaces | | Not Detected | NOT DETECTED | |
| MAIN HALL | 142 | Above Ceiling | High level | Not Accessed | DO NOT DISTURB | |
| MAIN HALL | 142 | Inside Boxing | Behind high level wall panels | Not Accessed | DO NOT DISTURB | |
| MAIN HALL | 142 | Fixed Ceiling | High level | Not Accessed | DO NOT DISTURB | |
| MAIN HALL | 142 | Heater | Within wall | Not Accessed | DO NOT DISTURB | |
| MAIN HALL | 142 | Stair Nosings | To area 154 | Plastics | NOT DETECTED | |
| MAIN HALL | 142 | Under Floor | | Not Accessed | DO NOT DISTURB | |
| MAIN HALL | 142 | Other Surfaces | | Not Detected | NOT DETECTED | |
| STORE | 143 | Fixed Ceiling | | Textured Coating | NOT DETECTED | |

"Do not Disturb" - asbestos containing materials are present / suspected to be present. "Not Detected" - material does not contain asbestos.



Site: Non HCC Properties **Unit:** THE HARLINGTON CENTRE

Reference: 10008999999 **Unit Reference:** -419054012 **Building No.:** []

This register is a list of the asbestos we have found to date in the accessible areas of this building and is designed to inform those undertaking routine maintenance. It normally excludes ducts (floors and walls), floor tiles, hidden floor coverings, ceiling voids, textured coatings (Artex), putty to windows etc. If you are undertaking refurbishment works or works in areas we have not yet accessed or any area that is not specifically mentioned, you must request a survey through Property Services beforehand. See Manager's Guide for more information. If an area is marked that Access is Restricted, do not enter

| Room Title | Rm No. | Position | Details | Material Inspected | Asbestos | Access Restricted? |
|---------------------|--------|-------------------|---|--------------------|----------------|--------------------|
| STORE | 143 | Lino | Modern | Not Detected | NOT DETECTED | |
| STORE | 143 | Under Carpet/Lino | | Not Accessed | DO NOT DISTURB | |
| STORE | 143 | Other Surfaces | | Not Detected | NOT DETECTED | |
| STORE/CLOAKROOM | 144 | Above Ceiling | Limited access due to vent trunking above hatch | Not Accessed | DO NOT DISTURB | |
| STORE/CLOAKROOM | 144 | Fixed Ceiling | | Textured Coating | NOT DETECTED | |
| STORE/CLOAKROOM | 144 | Electrical Box | Modern | Not Detected | NOT DETECTED | |
| STORE/CLOAKROOM | 144 | Heater | To wall | Not Accessed | DO NOT DISTURB | |
| STORE/CLOAKROOM | 144 | Lino | Modern | Not Detected | NOT DETECTED | |
| STORE/CLOAKROOM | 144 | Under Carpet/Lino | | Not Accessed | DO NOT DISTURB | |
| STORE/CLOAKROOM | 144 | Other Surfaces | | Not Detected | NOT DETECTED | |
| ELECTRICAL CUPBOARD | 145 | Electrical Box | Modern | Not Detected | NOT DETECTED | |
| ELECTRICAL CUPBOARD | 145 | Pipework | Beneath insulation | Not Accessed | DO NOT DISTURB | |
| ELECTRICAL CUPBOARD | 145 | Other Surfaces | | Not Detected | NOT DETECTED | |
| ACCESSIBLE TOILET | 146 | Above Ceiling | Coating to walls | Not Detected | NOT DETECTED | |
| ACCESSIBLE TOILET | 146 | Above Ceiling | Above fixed ceiling | Textured Coating | NOT DETECTED | |
| ACCESSIBLE TOILET | 146 | Above Ceiling | Beneath insulation to pipework | Not Accessed | DO NOT DISTURB | |
| ACCESSIBLE TOILET | 146 | Above Ceiling | Coating to fixed ceiling | Not Detected | NOT DETECTED | |
| ACCESSIBLE TOILET | 146 | Inside Boxing | | Textured Coating | NOT DETECTED | |
| ACCESSIBLE TOILET | 146 | Lino | Modern | Not Accessed | DO NOT DISTURB | |
| ACCESSIBLE TOILET | 146 | Under Carpet/Lino | | Not Detected | NOT DETECTED | |
| ACCESSIBLE TOILET | 146 | Under Carpet/Lino | | Not Accessed | DO NOT DISTURB | |

"Do not Disturb" - asbestos containing materials are present / suspected to be present. "Not Detected" - material does not contain asbestos.



Site: Non HCC Properties Unit: THE HARLINGTON CENTRE
 Reference: 10008999999 Unit Reference: -419054012 Building No:

This register is a list of the asbestos we have found to date in the accessible areas of this building and is designed to inform those undertaking routine maintenance. It normally excludes ducts (floors and walls), floor tiles, hidden floor coverings, ceiling voids, textured coatings (Artex), putty to windows etc. If you are undertaking refurbishment works or works in areas we have not yet accessed or any area that is not specifically mentioned, you must request a survey through Property Services beforehand. See Manager's Guide for more information. If an area is marked that Access is Restricted, do not enter

| Room Title | Rm No. | Position | Details | Material Inspected | Asbestos | Access Restricted? |
|-------------------|--------|-------------------|---|--------------------|----------------|--------------------|
| ACCESSIBLE TOILET | 146 | Wall | Behind tiles | Not Accessed | DO NOT DISTURB | |
| ACCESSIBLE TOILET | 146 | Other Surfaces | | Not Detected | NOT DETECTED | |
| FEMALE TOILET | 147 | Above Ceiling | Debris to ceiling tiles | Bitumen Product | NOT DETECTED | |
| FEMALE TOILET | 147 | Above Ceiling | Coating to wall | Textured Coating | NOT DETECTED | |
| FEMALE TOILET | 147 | Above Ceiling | Coating to beam | Textured Coating | NOT DETECTED | |
| FEMALE TOILET | 147 | Above Ceiling | Beneath insulation to pipework | Not Accessed | DO NOT DISTURB | |
| FEMALE TOILET | 147 | Inside Boxing | Beneath sinks | Not Accessed | DO NOT DISTURB | |
| FEMALE TOILET | 147 | Lino | Modern | Not Detected | NOT DETECTED | |
| FEMALE TOILET | 147 | Under Carpet/Lino | | Not Accessed | DO NOT DISTURB | |
| FEMALE TOILET | 147 | Wall | Behind cladding | Not Accessed | DO NOT DISTURB | |
| FEMALE TOILET | 147 | Other Surfaces | | Not Detected | NOT DETECTED | |
| STORE | 148 | Above Ceiling | Coating to walls | Textured Coating | NOT DETECTED | |
| STORE | 148 | Above Ceiling | Above secondary fixed ceiling | Not Accessed | DO NOT DISTURB | |
| STORE | 148 | Above Ceiling | Coating to secondary fixed ceiling | Textured Coating | NOT DETECTED | |
| STORE | 148 | Wall | | Textured Coating | NOT DETECTED | |
| STORE | 148 | Other Surfaces | | Not Detected | NOT DETECTED | |
| CORRIDOR | 149 | Above Ceiling | Beneath insulation to pipework | Not Accessed | DO NOT DISTURB | |
| CORRIDOR | 149 | Above Ceiling | Above fixed ceiling | Not Accessed | DO NOT DISTURB | |
| CORRIDOR | 149 | Above Ceiling | Debris to ceiling tiles | Textured Coating | NOT DETECTED | |
| CORRIDOR | 149 | Above Ceiling | Coating to walls adjacent areas 145 - 148 | Textured Coating | NOT DETECTED | |

"Do not Disturb" - asbestos containing materials are present / suspected to be present. "Not Detected" - material does not contain asbestos.

| | |
|---------------------------------|------------------------------------|
| Site: Non HCC Properties | Unit: THE HARLINGTON CENTRE |
| Reference: 10008999999 | Building No: -419054012 |
| Unit Reference: | |

This register is a list of the asbestos we have found to date in the accessible areas of this building and is designed to inform those undertaking routine maintenance. It normally excludes ducts (floors and walls), floor tiles, hidden floor coverings, ceiling voids, textured coatings (Artex), putty to windows etc. If you are undertaking refurbishment works or works in areas we have not yet accessed or any area that is not specifically mentioned, you must request a survey through Property Services beforehand. See Manager's Guide for more information. If an area is marked that Access is Restricted, do not enter

| Room Title | Rm No. | Position | Details | Material Inspected | Asbestos | Access Restricted? |
|--------------|--------|-------------------|---|--------------------|----------------|--------------------|
| CORRIDOR | 149 | Above Ceiling | Coating to fixed ceiling adjacent areas 145 - 148 | Textured Coating | NOT DETECTED | |
| CORRIDOR | 149 | Floor Duct | | Not Accessed | DO NOT DISTURB | |
| CORRIDOR | 149 | Heater | Within wall | Not Accessed | DO NOT DISTURB | |
| CORRIDOR | 149 | Under Carpet/Lino | | Not Accessed | DO NOT DISTURB | |
| CORRIDOR | 149 | Other Surfaces | | Not Detected | NOT DETECTED | |
| TOILET LOBBY | 150 | Above Ceiling | Coating to fixed ceiling | Textured Coating | NOT DETECTED | |
| TOILET LOBBY | 150 | Above Ceiling | Within boxing | Not Accessed | DO NOT DISTURB | |
| TOILET LOBBY | 150 | Above Ceiling | Above fixed ceiling | Not Accessed | DO NOT DISTURB | |
| TOILET LOBBY | 150 | Above Ceiling | Coating to walls | Textured Coating | NOT DETECTED | |
| TOILET LOBBY | 150 | Under Carpet/Lino | | Not Accessed | DO NOT DISTURB | |
| TOILET LOBBY | 150 | Other Surfaces | | Not Detected | NOT DETECTED | |
| MALE TOILET | 151 | Above Ceiling | Coating to fixed ceiling | Textured Coating | NOT DETECTED | |
| MALE TOILET | 151 | Above Ceiling | Beneath insulation to pipework | Not Accessed | DO NOT DISTURB | |
| MALE TOILET | 151 | Above Ceiling | Within vent trunking | Not Accessed | DO NOT DISTURB | |
| MALE TOILET | 151 | Above Ceiling | Above fixed ceiling | Not Accessed | DO NOT DISTURB | |
| MALE TOILET | 151 | Above Ceiling | Coating to walls | Textured Coating | NOT DETECTED | |
| MALE TOILET | 151 | Inside Boxing | Beneath sinks | Not Detected | NOT DETECTED | |
| MALE TOILET | 151 | Lino | Modern | Not Detected | NOT DETECTED | |
| MALE TOILET | 151 | Under Carpet/Lino | | Not Accessed | DO NOT DISTURB | |
| MALE TOILET | 151 | Wall | Behind cladding | Not Accessed | DO NOT DISTURB | |

"Do not Disturb" - asbestos containing materials are present / suspected to be present. "Not Detected" - material does not contain asbestos.

Site: Non HCC Properties **Unit:** THE HARLINGTON CENTRE

Reference: 10008999999 **Unit Reference:** -419054012 **Building No:**

This register is a list of the asbestos we have found to date in the accessible areas of this building and is designed to inform those undertaking routine maintenance. It normally excludes ducts (floors and walls), floor tiles, hidden floor coverings, ceiling voids, textured coatings (Artex), putty to windows etc. If you are undertaking refurbishment works or works in areas we have not yet accessed or any area that is not specifically mentioned, you must request a survey through Property Services beforehand. See Manager's Guide for more information. If an area is marked that Access is Restricted, do not enter

| Room Title | Rm No. | Position | Details | Material Inspected | Asbestos | Access Restricted? |
|-----------------|--------|-------------------|---|--------------------|----------------|--------------------|
| MALE TOILET | 151 | Other Surfaces | | Not Detected | NOT DETECTED | |
| LOBBY | 152 | Above Ceiling | Above fixed ceiling | Not Accessed | DO NOT DISTURB | |
| LOBBY | 152 | Above Ceiling | Coating to walls | Textured Coating | NOT DETECTED | |
| LOBBY | 152 | Above Ceiling | Coating to fixed ceiling | Textured Coating | NOT DETECTED | |
| LOBBY | 152 | Above Ceiling | Above ceiling panel to area 142 | Not Accessed | DO NOT DISTURB | |
| LOBBY | 152 | Above Ceiling | Coating debris to ceiling tiles | Textured Coating | NOT DETECTED | |
| LOBBY | 152 | Under Carpet/Lino | Remnants of blue floor tiles beneath skirting board | Vinyl Flooring | DO NOT DISTURB | |
| LOBBY | 152 | Under Carpet/Lino | Floor adhesive | Bitumen Product | DO NOT DISTURB | |
| LOBBY | 152 | Other Surfaces | | Not Detected | NOT DETECTED | |
| PROJECTION ROOM | 153 | Fixed Ceiling | | Textured Coating | NOT DETECTED | |
| PROJECTION ROOM | 153 | Under Carpet/Lino | | Not Accessed | DO NOT DISTURB | |
| PROJECTION ROOM | 153 | Other Surfaces | | Not Detected | NOT DETECTED | |
| STAGE | 154 | Inside Boxing | To stairs | Not Accessed | DO NOT DISTURB | |
| STAGE | 154 | Beam Casing | High level to area 142 | Insulating Board | DO NOT DISTURB | |
| STAGE | 154 | Ceiling | High level | Not Accessed | DO NOT DISTURB | |
| STAGE | 154 | Electrical Box | | Not Accessed | DO NOT DISTURB | |
| STAGE | 154 | Lino | Modern | Not Detected | NOT DETECTED | |
| STAGE | 154 | Trunking | Within | Not Accessed | DO NOT DISTURB | |
| STAGE | 154 | Under Floor | | Not Accessed | DO NOT DISTURB | |
| STAGE | 154 | Wall | High level areas | Not Accessed | DO NOT DISTURB | |

"Do not Disturb" - asbestos containing materials are present / suspected to be present. "Not Detected" - material does not contain asbestos.



Site: Non HCC Properties **Unit:** THE HARLINGTON CENTRE

Reference: 10008999999 **Unit Reference:** -419054012 **Building No:**

This register is a list of the asbestos we have found to date in the accessible areas of this building and is designed to inform those undertaking routine maintenance. It normally excludes ducts (floors and walls), floor tiles, hidden floor coverings, ceiling voids, textured coatings (Artex), putty to windows etc. If you are undertaking refurbishment works or works in areas we have not yet accessed or any area that is not specifically mentioned, you must request a survey through Property Services beforehand. See Manager's Guide for more information. If an area is marked that Access is Restricted, do not enter

| Room Title | Rm No. | Position | Details | Material Inspected | Asbestos | Access Restricted? |
|------------|--------|-------------------|---|--------------------|----------------|--------------------|
| STAGE | 154 | Wall Panels | High level to areal 142 | Insulating Board | DO NOT DISTURB | |
| STAGE | 154 | Other Surfaces | | Not Detected | NOT DETECTED | |
| OFFICE | 155 | Boiler | Modern | Not Detected | NOT DETECTED | |
| OFFICE | 155 | Fixed Ceiling | | Textured Coating | NOT DETECTED | |
| OFFICE | 155 | Under Carpet/Lino | | Not Detected | NOT DETECTED | |
| OFFICE | 155 | Other Surfaces | | Not Detected | NOT DETECTED | |
| BOARD ROOM | 156 | Above Ceiling | Above fixed ceiling | Not Accessed | DO NOT DISTURB | |
| BOARD ROOM | 156 | Above Ceiling | Coating debris to ceiling tiles | Textured Coating | NOT DETECTED | |
| BOARD ROOM | 156 | Above Ceiling | Lining above part of fixed ceiling | Bitumen Product | NOT DETECTED | |
| BOARD ROOM | 156 | Above Ceiling | Coating to fixed ceiling | Textured Coating | NOT DETECTED | |
| BOARD ROOM | 156 | Safe | | Not Accessed | DO NOT DISTURB | |
| BOARD ROOM | 156 | Under Carpet/Lino | | Not Detected | NOT DETECTED | |
| BOARD ROOM | 156 | Other Surfaces | | Not Detected | NOT DETECTED | |
| OFFICE | 157 | Fixed Ceiling | | Textured Coating | NOT DETECTED | |
| OFFICE | 157 | Under Carpet/Lino | | Not Detected | NOT DETECTED | |
| OFFICE | 157 | Other Surfaces | | Not Detected | NOT DETECTED | |
| RECEPTION | 158 | Above Ceiling | Above suspended ceiling - above fixed ceiling | Not Accessed | DO NOT DISTURB | |
| RECEPTION | 158 | Above Ceiling | Above suspended ceiling - beneath insulation to pipework | Not Accessed | DO NOT DISTURB | |
| RECEPTION | 158 | Above Ceiling | Above suspended ceiling - coating debris to ceiling tiles | Textured Coating | NOT DETECTED | |

"Do not Disturb" - asbestos containing materials are present / suspected to be present. "Not Detected" - material does not contain asbestos.



Site: Non HCC Properties

Unit:

THE HARLINGTON CENTRE

Reference: 10008999999

Unit Reference:

-419054012

Building No:

This register is a list of the asbestos we have found to date in the accessible areas of this building and is designed to inform those undertaking routine maintenance. It normally excludes ducts (floors and walls), floor tiles, hidden floor coverings, ceiling voids, textured coatings (Artex), putty to windows etc. If you are undertaking refurbishment works or works in areas we have not yet accessed or any area that is not specifically mentioned, you must request a survey through Property Services beforehand. See Manager's Guide for more information. If an area is marked that Access is Restricted, do not enter

| Room Title | Rm No. | Position | Details | Material Inspected | Asbestos | Access Restricted? |
|--------------------|--------|----------------|--|--------------------|----------------|--------------------|
| RECEPTION | 158 | Above Ceiling | Above suspended ceiling - coating to wall | Textured Coating | NOT DETECTED | |
| RECEPTION | 158 | Above Ceiling | Above suspended ceiling - coating to fixed ceiling | Textured Coating | NOT DETECTED | |
| RECEPTION | 158 | Inside Boxing | To wall adjacent area 157 | Not Accessed | DO NOT DISTURB | |
| RECEPTION | 158 | Fixed Ceiling | | Textured Coating | NOT DETECTED | |
| RECEPTION | 158 | Floor Duct | | Not Accessed | DO NOT DISTURB | |
| RECEPTION | 158 | Other Surfaces | | Not Detected | NOT DETECTED | |
| LOFT ABOVE 156 | 159 | Electrical Box | Modern | Not Detected | NOT DETECTED | |
| LOFT ABOVE 156 | 159 | Gasket | Tap to water tank | Composite Gasket | NOT DETECTED | |
| LOFT ABOVE 156 | 159 | Light Fitting | Sealant to glazing | Putty | DO NOT DISTURB | |
| LOFT ABOVE 156 | 159 | Roof Felt | | Bitumen Product | NOT DETECTED | |
| LOFT ABOVE 156 | 159 | Under Floor | | Not Accessed | DO NOT DISTURB | |
| LOFT ABOVE 156 | 159 | Wall | High level behind mineral fibre | Not Accessed | DO NOT DISTURB | |
| LOFT ABOVE 156 | 159 | Other Surfaces | | Not Detected | NOT DETECTED | |
| LOFT ABOVE 162-166 | 160 | Roof Felt | | Bitumen Product | NOT DETECTED | |
| LOFT ABOVE 162-166 | 160 | Wall | Coating to wall adjacent hatchway from area 162 | Textured Coating | NOT DETECTED | |
| LOFT ABOVE 162-166 | 160 | Other Surfaces | Inaccessible for inspection | Not Accessed | DO NOT DISTURB | |
| LOFT ABOVE 145-152 | 161 | Roof Felt | | Bitumen Product | NOT DETECTED | |
| LOFT ABOVE 145-152 | 161 | Other Surfaces | Inaccessible for inspection | Not Accessed | DO NOT DISTURB | |
| CORRIDOR | 162 | Fixed Ceiling | | Textured Coating | NOT DETECTED | |

"Do not Disturb" - asbestos containing materials are present / suspected to be present. "Not Detected" - material does not contain asbestos.



Site: Non HCC Properties **Unit:** THE HARLINGTON CENTRE

Reference: 10008999999 **Unit Reference:** -419054012 **Building No:** []

This register is a list of the asbestos we have found to date in the accessible areas of this building and is designed to inform those undertaking routine maintenance. It normally excludes ducts (floors and walls), floor tiles, hidden floor coverings, ceiling voids, textured coatings (Artex), putty to windows etc. If you are undertaking refurbishment works or works in areas we have not yet accessed or any area that is not specifically mentioned, you must request a survey through Property Services beforehand. See Manager's Guide for more information. If an area is marked that Access is Restricted, do not enter

| Room Title | Rm No. | Position | Details | Material Inspected | Asbestos | Access Restricted? |
|-------------------|--------|-------------------|-------------------------------------|--------------------|----------------|--------------------|
| CORRIDOR | 162 | Floor Adhesive | Extends beneath lino | Bitumen Product | DO NOT DISTURB | |
| CORRIDOR | 162 | Floor Tiles | Blue | Vinyl Flooring | DO NOT DISTURB | |
| CORRIDOR | 162 | Heater | Within wall | Not Accessed | DO NOT DISTURB | |
| CORRIDOR | 162 | Lino | Blue | Not Detected | NOT DETECTED | |
| CORRIDOR | 162 | Stair Nosings | | Plastics | NOT DETECTED | |
| CORRIDOR | 162 | Wall | | Textured Coating | NOT DETECTED | |
| CORRIDOR | 162 | Other Surfaces | | Not Detected | NOT DETECTED | |
| CHANGING ROOM TWO | 163 | Above Ceiling | Within boxing | Not Accessed | DO NOT DISTURB | |
| CHANGING ROOM TWO | 163 | Above Ceiling | Coating to fixed ceiling boxing | Textured Coating | NOT DETECTED | |
| CHANGING ROOM TWO | 163 | Above Ceiling | Beneath insulation to pipework | Not Accessed | DO NOT DISTURB | |
| CHANGING ROOM TWO | 163 | Inside Boxing | Beneath shower trays | Not Accessed | DO NOT DISTURB | |
| CHANGING ROOM TWO | 163 | Floor Tiles | Mottled blue - modern | Not Detected | NOT DETECTED | |
| CHANGING ROOM TWO | 163 | Under Carpet/Lino | | Not Accessed | DO NOT DISTURB | |
| CHANGING ROOM TWO | 163 | Wall | | Textured Coating | NOT DETECTED | |
| CHANGING ROOM TWO | 163 | Water Heater | Modern | Not Detected | NOT DETECTED | |
| CHANGING ROOM TWO | 163 | Other Surfaces | | Not Detected | NOT DETECTED | |
| CHANGING ROOM ONE | 164 | Above Ceiling | Coating to fixed ceiling and boxing | Textured Coating | NOT DETECTED | |
| CHANGING ROOM ONE | 164 | Above Ceiling | Within boxing | Not Accessed | DO NOT DISTURB | |
| CHANGING ROOM ONE | 164 | Inside Boxing | Beneath showers | Not Accessed | DO NOT DISTURB | |
| CHANGING ROOM ONE | 164 | Floor Tiles | Mottled blue - modern | Not Detected | NOT DETECTED | |

"Do not Disturb" - asbestos containing materials are present / suspected to be present. "Not Detected" - material does not contain asbestos.



Site:

Non HCC Properties

Unit:

THE HARLINGTON CENTRE

Reference:

10008999999

Unit Reference:

-419054012

Building No:

This register is a list of the asbestos we have found to date in the accessible areas of this building and is designed to inform those undertaking routine maintenance. It normally excludes ducts (floors and walls), floor tiles, hidden floor coverings, ceiling voids, textured coatings (Artex), putty to windows etc. If you are undertaking refurbishment works or works in areas we have not yet accessed or any area that is not specifically mentioned, you must request a survey through Property Services beforehand. See Manager's Guide for more information. If an area is marked that Access is Restricted, do not enter

| Room Title | Rm No. | Position | Details | Material Inspected | Asbestos | Access Restricted? |
|---------------------|--------|-------------------|------------------------------|--------------------|----------------|--------------------|
| CHANGING ROOM ONE | 164 | Heater | Modern | Not Detected | NOT DETECTED | |
| CHANGING ROOM ONE | 164 | Under Carpet/Lino | Adhesive | Bitumen Product | DO NOT DISTURB | |
| CHANGING ROOM ONE | 164 | Wall | | Textured Coating | NOT DETECTED | |
| CHANGING ROOM ONE | 164 | Water Heater | Modern | Not Detected | NOT DETECTED | |
| CHANGING ROOM ONE | 164 | Other Surfaces | | Not Detected | NOT DETECTED | |
| ELECTRICAL CUPBOARD | 165 | Electrical Box | | Not Accessed | DO NOT DISTURB | |
| ELECTRICAL CUPBOARD | 165 | Pipework | Beneath insulation | Not Detected | NOT DETECTED | |
| ELECTRICAL CUPBOARD | 165 | Other Surfaces | | Not Detected | NOT DETECTED | |
| KITCHEN | 166 | Inside Boxing | | Not Accessed | DO NOT DISTURB | |
| KITCHEN | 166 | Fixed Ceiling | | Textured Coating | NOT DETECTED | |
| KITCHEN | 166 | Pipework | Coating | Textured Coating | NOT DETECTED | |
| KITCHEN | 166 | Under Sink | Pad | Bitumen Product | NOT DETECTED | |
| KITCHEN | 166 | Wall | | Textured Coating | NOT DETECTED | |
| KITCHEN | 166 | Water Heater | Modern | Not Detected | NOT DETECTED | |
| KITCHEN | 166 | Other Surfaces | | Not Detected | NOT DETECTED | |
| STAIRS/LOBBY | 167 | Above Doors | To area 169 | Insulating Board | DO NOT DISTURB | |
| STAIRS/LOBBY | 167 | Fixed Ceiling | | Textured Coating | NOT DETECTED | |
| STAIRS/LOBBY | 167 | Floor Adhesive | | Bitumen Product | DO NOT DISTURB | |
| STAIRS/LOBBY | 167 | Floor Tiles | Blue - to stairs and landing | Vinyl Flooring | DO NOT DISTURB | |
| STAIRS/LOBBY | 167 | Stair Nosings | | Plastics | NOT DETECTED | |

"Do not Disturb" - asbestos containing materials are present / suspected to be present. "Not Detected" - material does not contain asbestos.



Site: Non HCC Properties **Unit:** THE HARLINGTON CENTRE
Reference: 10008999999 **Unit Reference:** -419054012 **Building No.:** []

This register is a list of the asbestos we have found to date in the accessible areas of this building and is designed to inform those undertaking routine maintenance. It normally excludes ducts (floors and walls), floor tiles, hidden floor coverings, ceiling voids, textured coatings (Artex), putty to windows etc. If you are undertaking refurbishment works or works in areas we have not yet accessed or any area that is not specifically mentioned, you must request a survey through Property Services beforehand. See Manager's Guide for more information. If an area is marked that Access is Restricted, do not enter

| Room Title | Rm No. | Position | Details | Material Inspected | Asbestos | Access Restricted? |
|--------------|--------|----------------|---|--------------------|----------------|--------------------|
| STAIRS/LOBBY | 167 | Wall | | Textured Coating | NOT DETECTED | |
| STAIRS/LOBBY | 167 | Other Surfaces | | Not Detected | NOT DETECTED | |
| BOILER ROOM | 168 | Boiler | Within - x5 | Not Accessed | DO NOT DISTURB | |
| BOILER ROOM | 168 | Fixed Ceiling | Residues adjacent pipework and wall to area 167 | Lagging | NOT DETECTED | |
| BOILER ROOM | 168 | Chimney | Within | Not Accessed | DO NOT DISTURB | |
| BOILER ROOM | 168 | Electrical Box | Debris to top of switch boxes | Lagging | NOT DETECTED | Yes |
| BOILER ROOM | 168 | Electrical Box | Various | Not Accessed | DO NOT DISTURB | |
| BOILER ROOM | 168 | Electric Cable | Residues to intake cable above switch boxes | Lagging | NOT DETECTED | |
| BOILER ROOM | 168 | Gasket | To pipe flanges - recessed within flanges | Not Accessed | DO NOT DISTURB | |
| BOILER ROOM | 168 | Pipework | Beneath insulation | Not Accessed | DO NOT DISTURB | |
| BOILER ROOM | 168 | Pipework | Residues adjacent wall to area 170 and door to area 167 | Lagging | NOT DETECTED | |
| BOILER ROOM | 168 | Pipework | Residues and hardset to pipe adjacent wall and door to area 167 | Lagging | NOT DETECTED | Yes |
| BOILER ROOM | 168 | Trunking | Within | Not Accessed | DO NOT DISTURB | |
| BOILER ROOM | 168 | Vent | Within | Not Accessed | DO NOT DISTURB | |
| BOILER ROOM | 168 | Wall | Residues adjacent area 173 behind pressurisation unit | Lagging | NOT DETECTED | |
| BOILER ROOM | 168 | Wall | Residues to wall adjacent area 170 | Lagging | NOT DETECTED | |
| BOILER ROOM | 168 | Wall | Residues above and around door to area 167 | Lagging | NOT DETECTED | |

"Do not Disturb" - asbestos containing materials are present / suspected to be present. "Not Detected" - material does not contain asbestos.

| | |
|---------------------------------|------------------------------------|
| Site: Non HCC Properties | Unit: THE HARLINGTON CENTRE |
| Reference: 10008999999 | Unit Reference: -419054012 |
| | Building No: |

This register is a list of the asbestos we have found to date in the accessible areas of this building and is designed to inform those undertaking routine maintenance. It normally excludes ducts (floors and walls), floor tiles, hidden floor coverings, ceiling voids, textured coatings (Artex), putty to windows etc. If you are undertaking refurbishment works or works in areas we have not yet accessed or any area that is not specifically mentioned, you must request a survey through Property Services beforehand. See Manager's Guide for more information. If an area is marked that Access is Restricted, do not enter

| Room Title | Rm No. | Position | Details | Material Inspected | Asbestos | Access Restricted? |
|-------------|--------|----------------|--|--------------------|----------------|--------------------|
| BOILER ROOM | 168 | Wall | Residues adjacent area 167 either side of the chimney breast | Lagging | NOT DETECTED | |
| BOILER ROOM | 168 | Wall | Residues to external wall | Lagging | NOT DETECTED | |
| BOILER ROOM | 168 | Other Surfaces | | Not Detected | NOT DETECTED | |
| CORRIDOR | 169 | Above Doors | Panel to area 167 | Insulating Board | DO NOT DISTURB | |
| CORRIDOR | 169 | Beam Casing | Within | Not Accessed | DO NOT DISTURB | |
| CORRIDOR | 169 | Other Surfaces | | Not Detected | NOT DETECTED | |
| STORE | 170 | Blanking Board | Behind | Not Accessed | DO NOT DISTURB | |
| STORE | 170 | Pipework | Beneath insulation | Not Accessed | DO NOT DISTURB | |
| STORE | 170 | Other Surfaces | | Not Detected | NOT DETECTED | |
| STORE | 171 | Beam Casing | Within | Not Accessed | DO NOT DISTURB | |
| STORE | 171 | Pipework | Beneath insulation | Not Accessed | DO NOT DISTURB | |
| STORE | 171 | Other Surfaces | | Not Detected | NOT DETECTED | |
| STAGE STORE | 172 | Beam Casing | Within | Not Accessed | DO NOT DISTURB | |
| STAGE STORE | 172 | Inside Column | | Not Accessed | DO NOT DISTURB | |
| STAGE STORE | 172 | Pipework | Beneath insulation | Not Accessed | DO NOT DISTURB | |
| STAGE STORE | 172 | Vent | In wall | Not Accessed | DO NOT DISTURB | |
| STAGE STORE | 172 | Other Surfaces | | Not Detected | NOT DETECTED | |
| BIN STORE | 173 | Ceiling | Shuttering to right hand pipe exit adjacent back wall | Insulating Board | DO NOT DISTURB | |

"Do not Disturb" - asbestos containing materials are present / suspected to be present. "Not Detected" - material does not contain asbestos.



Site: Non HCC Properties **Unit:** THE HARLINGTON CENTRE
Reference: 10008999999 **Unit Reference:** -419054012 **Building No:**

This register is a list of the asbestos we have found to date in the accessible areas of this building and is designed to inform those undertaking routine maintenance. It normally excludes ducts (floors and walls), floor tiles, hidden floor coverings, ceiling voids, textured coatings (Artex), putty to windows etc. If you are undertaking refurbishment works or works in areas we have not yet accessed or any area that is not specifically mentioned, you must request a survey through Property Services beforehand. See Manager's Guide for more information. If an area is marked that Access is Restricted, do not enter

| Room Title | Rm No. | Position | Details | Material Inspected | Asbestos | Access Restricted? |
|------------|--------|-------------------|---|--------------------|----------------|--------------------|
| BIN STORE | 173 | Ceiling | Lining within left hand pipe exit - inaccessible for inspection | Bitumen Product | DO NOT DISTURB | |
| BIN STORE | 173 | Damp Proof Course | Adjacent external door | Bitumen Product | NOT DETECTED | |
| BIN STORE | 173 | Pipework | Beneath insulation | Not Accessed | DO NOT DISTURB | |
| BIN STORE | 173 | Other Surfaces | | Not Detected | NOT DETECTED | |
| TOILET | 174 | Inside Boxing | Low level | Not Accessed | DO NOT DISTURB | |
| TOILET | 174 | Toilet Seat | | Plastics | NOT DETECTED | |
| TOILET | 174 | Water Heater | | Not Detected | NOT DETECTED | |
| TOILET | 174 | Other Surfaces | | Not Detected | NOT DETECTED | |
| CORRIDOR | 175 | Above Doors | Void above wooden soffit panel to double door | Not Accessed | DO NOT DISTURB | |
| CORRIDOR | 175 | Floor Adhesive | Beneath grey floor tiles | Bitumen Product | DO NOT DISTURB | |
| CORRIDOR | 175 | Floor Duct | x1 | Not Accessed | DO NOT DISTURB | |
| CORRIDOR | 175 | Floor Tiles | Grey - modern | Not Detected | NOT DETECTED | |
| CORRIDOR | 175 | Pipework | To pipe flange to tap - high level | Composite Gasket | NOT DETECTED | |
| CORRIDOR | 175 | Wall | Coating | Textured Coating | NOT DETECTED | |
| CORRIDOR | 175 | Other Surfaces | | Not Detected | NOT DETECTED | |
| CORRIDOR | 176 | Fixed Ceiling | | Textured Coating | NOT DETECTED | |
| CORRIDOR | 176 | Floor Tiles | Grey - modern | Not Detected | NOT DETECTED | |
| CORRIDOR | 176 | Under Carpet/Lino | | Not Accessed | DO NOT DISTURB | |
| CORRIDOR | 176 | Wall | | Textured Coating | NOT DETECTED | |

"Do not Disturb" - asbestos containing materials are present / suspected to be present. "Not Detected" - material does not contain asbestos.



Site: Non HCC Properties **Unit:** THE HARLINGTON CENTRE
Reference: 10008999999 **Unit Reference:** -419054012 **Building No.:** []

This register is a list of the asbestos we have found to date in the accessible areas of this building and is designed to inform those undertaking routine maintenance. It normally excludes ducts (floors and walls), floor tiles, hidden floor coverings, ceiling voids, textured coatings (Artex), putty to windows etc. If you are undertaking refurbishment works or works in areas we have not yet accessed or any area that is not specifically mentioned, you must request a survey through Property Services beforehand. See Manager's Guide for more information. If an area is marked that Access is Restricted, do not enter

| Room Title | Rm No. | Position | Details | Material Inspected | Asbestos | Access Restricted? |
|--------------|--------|---------------------|---|--------------------|----------------|--------------------|
| CORRIDOR | 176 | Other Surfaces | | Not Detected | NOT DETECTED | |
| FOOD LIFT | 177 | Accessible Surfaces | Inaccessible for inspection beyond inside of lift car | Not Accessed | DO NOT DISTURB | |
| KITCHEN | 178 | Above Ceiling | Beneath foil covered mineral fibre insulation to pipework | Not Accessed | DO NOT DISTURB | |
| KITCHEN | 178 | Above Ceiling | On concrete ceiling | Textured Coating | NOT DETECTED | |
| KITCHEN | 178 | Inside Boxing | Beneath and behind cupboards | Not Accessed | DO NOT DISTURB | |
| KITCHEN | 178 | Fixed Ceiling | On plasterboard above stair area | Textured Coating | NOT DETECTED | |
| KITCHEN | 178 | Lino | Modern | Not Detected | NOT DETECTED | |
| KITCHEN | 178 | Under Carpet/Lino | | Not Accessed | DO NOT DISTURB | |
| KITCHEN | 178 | Under Sink | Pads x2 | Bitumen Product | NOT DETECTED | |
| KITCHEN | 178 | Under Sink | Water heater - modern | Not Detected | NOT DETECTED | |
| KITCHEN | 178 | Wall Void | Behind sink - floor adhesive to green floor tile remnants and floor | Bitumen Product | NOT DETECTED | |
| KITCHEN | 178 | Wall Void | Behind sink - green floor tile remnants | Vinyl Flooring | NOT DETECTED | |
| KITCHEN | 178 | Other Surfaces | | Not Detected | NOT DETECTED | |
| FREEZER ROOM | 179 | Above Ceiling | To fixed concrete ceiling | Textured Coating | NOT DETECTED | |
| FREEZER ROOM | 179 | Above Ceiling | Beneath foil covered mineral fibre insulation to pipework | Not Accessed | DO NOT DISTURB | |
| FREEZER ROOM | 179 | Lino | Modern | Not Detected | NOT DETECTED | |
| FREEZER ROOM | 179 | Under Carpet/Lino | | Not Accessed | DO NOT DISTURB | |
| FREEZER ROOM | 179 | Other Surfaces | | Not Detected | NOT DETECTED | |

"Do not Disturb" - asbestos containing materials are present / suspected to be present. "Not Detected" - material does not contain asbestos.



Site: Non HCC Properties **Unit:** THE HARLINGTON CENTRE

Reference: 10008999999 **Unit Reference:** -419054012 **Building No.:** []

This register is a list of the asbestos we have found to date in the accessible areas of this building and is designed to inform those undertaking routine maintenance. It normally excludes ducts (floors and walls), floor tiles, hidden floor coverings, ceiling voids, textured coatings (Artex), putty to windows etc. If you are undertaking refurbishment works or works in areas we have not yet accessed or any area that is not specifically mentioned, you must request a survey through Property Services beforehand. See Manager's Guide for more information. If an area is marked that Access is Restricted, do not enter

| Room Title | Rm No. | Position | Details | Material Inspected | Asbestos | Access Restricted? |
|----------------------|--------|-------------------|---|--------------------|----------------|--------------------|
| STAIRS/LOBBY | 180 | Inside Boxing | To ceiling | Not Accessed | DO NOT DISTURB | |
| STAIRS/LOBBY | 180 | Floor Tiles | Pink - modern | Not Detected | NOT DETECTED | |
| STAIRS/LOBBY | 180 | Under Carpet/Lino | | Not Accessed | DO NOT DISTURB | |
| STAIRS/LOBBY | 180 | Other Surfaces | | Not Detected | NOT DETECTED | |
| ROOF SPACE ABOVE 123 | 181 | Floor | Limited access to eaves areas | Not Accessed | DO NOT DISTURB | |
| ROOF SPACE ABOVE 123 | 181 | Floor | Coating to redundant panels from ceiling adjacent hatch in area 126 | Textured Coating | NOT DETECTED | |
| ROOF SPACE ABOVE 123 | 181 | Floor | Limited access beneath mineral fibre insulation | Not Accessed | DO NOT DISTURB | |
| ROOF SPACE ABOVE 123 | 181 | Roof Felt | Sarking felt - modern | Not Detected | NOT DETECTED | |
| ROOF SPACE ABOVE 123 | 181 | Other Surfaces | | Not Detected | NOT DETECTED | |
| ROOF SPACE VIA 175 | 182 | Inside Boxing | Within - various | Not Accessed | DO NOT DISTURB | |
| ROOF SPACE VIA 175 | 182 | Fixed Ceiling | To lower section above 175 - residues to stratum | Bitumen Product | NOT DETECTED | |
| ROOF SPACE VIA 175 | 182 | Floor | Covering | Bitumen Product | DO NOT DISTURB | |
| ROOF SPACE VIA 175 | 182 | Floor | Roof covering debris | Bitumen Product | NOT DETECTED | |
| ROOF SPACE VIA 175 | 182 | Pipework | Beneath mineral fibre insulation | Not Detected | NOT DETECTED | |
| ROOF SPACE VIA 175 | 182 | Roof Felt | Beneath | Not Accessed | DO NOT DISTURB | |
| ROOF SPACE VIA 175 | 182 | Under Floor | | Not Accessed | DO NOT DISTURB | |
| ROOF SPACE VIA 175 | 182 | Wall | High level and surrounding areas | Not Accessed | DO NOT DISTURB | |
| ROOF SPACE VIA 175 | 182 | Other Surfaces | | Not Detected | NOT DETECTED | |

"Do not Disturb" - asbestos containing materials are present / suspected to be present. "Not Detected" - material does not contain asbestos.



Site: Non HCC Properties **Unit:** THE HARLINGTON CENTRE

Reference: 10008999999 **Unit Reference:** -419054012 **Building No:** []

This register is a list of the asbestos we have found to date in the accessible areas of this building and is designed to inform those undertaking routine maintenance. It normally excludes ducts (floors and walls), floor tiles, hidden floor coverings, ceiling voids, textured coatings (Artex), putty to windows etc. If you are undertaking refurbishment works or works in areas we have not yet accessed or any area that is not specifically mentioned, you must request a survey through Property Services beforehand. See Manager's Guide for more information. If an area is marked that Access is Restricted, do not enter

| Room Title | Rm No. | Position | Details | Material Inspected | Asbestos | Access Restricted? |
|--------------|--------|-------------------|--|--------------------|----------------|--------------------|
| LOBBY | 183 | Above Ceiling | | Not Accessed | DO NOT DISTURB | |
| LOBBY | 183 | Inside Boxing | Adjacent windows | Not Accessed | DO NOT DISTURB | |
| LOBBY | 183 | Heater | Within | Not Accessed | DO NOT DISTURB | |
| LOBBY | 183 | Other Surfaces | | Not Detected | NOT DETECTED | |
| STAIRS | 184 | Above Ceiling | | Not Accessed | DO NOT DISTURB | |
| STAIRS | 184 | Under Carpet/Lino | | Not Accessed | DO NOT DISTURB | |
| STAIRS | 184 | Other Surfaces | | Not Detected | NOT DETECTED | |
| STORE | 185 | Above Ceiling | Beneath mineral fibre insulation to pipework | Not Detected | NOT DETECTED | |
| STORE | 185 | Under Carpet/Lino | | Not Accessed | DO NOT DISTURB | |
| STORE | 185 | Other Surfaces | | Not Detected | NOT DETECTED | |
| DANCE STUDIO | 186 | Above Ceiling | | Not Accessed | DO NOT DISTURB | |
| DANCE STUDIO | 186 | Inside Boxing | Vertical between windows | Not Accessed | DO NOT DISTURB | |
| DANCE STUDIO | 186 | Heater | Within | Not Accessed | DO NOT DISTURB | |
| DANCE STUDIO | 186 | Lino | Modern | Not Detected | NOT DETECTED | |
| DANCE STUDIO | 186 | Under Carpet/Lino | | Not Accessed | DO NOT DISTURB | |
| DANCE STUDIO | 186 | Other Surfaces | | Not Detected | NOT DETECTED | |
| STORE | 187 | Above Ceiling | Beneath mineral fibre insulation to pipework | Not Accessed | DO NOT DISTURB | |
| STORE | 187 | Above Ceiling | Within ventilation unit | Not Accessed | DO NOT DISTURB | |
| STORE | 187 | Above Ceiling | Other surfaces | Not Detected | NOT DETECTED | |
| STORE | 187 | Above Ceiling | Lining to wall, high level to void | Bitumen Product | NOT DETECTED | |

"Do not Disturb" - asbestos containing materials are present / suspected to be present. "Not Detected" - material does not contain asbestos.



Site: Non HCC Properties **Unit:** THE HARLINGTON CENTRE

Reference: 10008999999 **Unit Reference:** -419054012 **Building No.:** []

This register is a list of the asbestos we have found to date in the accessible areas of this building and is designed to inform those undertaking routine maintenance. It normally excludes ducts (floors and walls), floor tiles, hidden floor coverings, ceiling voids, textured coatings (Artex), putty to windows etc. if you are undertaking refurbishment works or works in areas we have not yet accessed or any area that is not specifically mentioned, you must request a survey through Property Services beforehand. See Manager's Guide for more information. If an area is marked that Access is Restricted, do not enter

| Room Title | Rm No. | Position | Details | Material Inspected | Asbestos | Access Restricted? |
|------------|--------|-------------------|---|--------------------|----------------|--------------------|
| STORE | 187 | Above Ceiling | Coating to ceiling | Bitumen Product | NOT DETECTED | |
| STORE | 187 | Inside Boxing | Adjacent sink | Not Accessed | DO NOT DISTURB | |
| STORE | 187 | Lino | Modern | Not Detected | NOT DETECTED | |
| STORE | 187 | Under Carpet/Lino | | Not Accessed | DO NOT DISTURB | |
| STORE | 187 | Under Sink | Pad x2 | Bitumen Product | NOT DETECTED | |
| STORE | 187 | Other Surfaces | | Not Detected | NOT DETECTED | |
| WC | 188 | Fixed Ceiling | | Textured Coating | NOT DETECTED | |
| WC | 188 | Lino | Modern | Not Detected | NOT DETECTED | |
| WC | 188 | Under Carpet/Lino | | Not Accessed | DO NOT DISTURB | |
| WC | 188 | Wall | Coating | Textured Coating | NOT DETECTED | |
| WC | 188 | Water Heater | Within | Not Accessed | DO NOT DISTURB | |
| WC | 188 | Other Surfaces | | Not Detected | NOT DETECTED | |
| STORE | 189 | Electrical Box | Within cupboard - modern | Not Detected | NOT DETECTED | |
| STORE | 189 | Other Surfaces | | Not Detected | NOT DETECTED | |
| STORE | 190 | Under Carpet/Lino | | Not Accessed | DO NOT DISTURB | |
| STORE | 190 | Other Surfaces | | Not Detected | NOT DETECTED | |
| MALE WC | 191 | Above Ceiling | Coating to walls and ceiling | Textured Coating | NOT DETECTED | |
| MALE WC | 191 | Above Ceiling | Debris on ceiling tiles | Textured Coating | NOT DETECTED | |
| MALE WC | 191 | Inside Boxing | Quarry tile floor & modern water heater | Not Accessed | DO NOT DISTURB | |
| MALE WC | 191 | Lino | Modern | Not Detected | NOT DETECTED | |

"Do not Disturb" - asbestos containing materials are present / suspected to be present. "Not Detected" - material does not contain asbestos.



Site: Non HCC Properties **Unit:** THE HARLINGTON CENTRE

Reference: 10008999999 **Unit Reference:** -419054012 **Building No.:** []

This register is a list of the asbestos we have found to date in the accessible areas of this building and is designed to inform those undertaking routine maintenance. It normally excludes ducts (floors and walls), floor tiles, hidden floor coverings, ceiling voids, textured coatings (Artex), putty to windows etc. If you are undertaking refurbishment works or works in areas we have not yet accessed or any area that is not specifically mentioned, you must request a survey through Property Services beforehand. See Manager's Guide for more information. If an area is marked that Access is Restricted, do not enter

| Room Title | Rm No. | Position | Details | Material Inspected | Asbestos | Access Restricted? |
|------------|--------|-------------------|---|--------------------|----------------|--------------------|
| MALE WC | 191 | Under Carpet/Lino | | Not Accessed | DO NOT DISTURB | |
| MALE WC | 191 | Wall Void | Behind wall panels | Not Accessed | DO NOT DISTURB | |
| MALE WC | 191 | Other Surfaces | | Not Detected | NOT DETECTED | |
| FEMALE WC | 192 | Above Ceiling | Above fixed ceiling with textured coating | Not Accessed | DO NOT DISTURB | |
| FEMALE WC | 192 | Above Ceiling | Coating to walls and ceiling | Textured Coating | NOT DETECTED | |
| FEMALE WC | 192 | Inside Boxing | Beneath sink coating to wall | Textured Coating | NOT DETECTED | |
| FEMALE WC | 192 | Inside Boxing | Beneath sink - modern water heater | Not Detected | NOT DETECTED | |
| FEMALE WC | 192 | Lino | Modern | Not Detected | NOT DETECTED | |
| FEMALE WC | 192 | Under Carpet/Lino | | Not Accessed | DO NOT DISTURB | |
| FEMALE WC | 192 | Wall Void | Behind wall panels | Not Accessed | DO NOT DISTURB | |
| FEMALE WC | 192 | Other Surfaces | | Not Detected | NOT DETECTED | |
| CORRIDOR | 193 | Inside Boxing | Vertical with light switch attached | Not Accessed | DO NOT DISTURB | |
| CORRIDOR | 193 | Fixed Ceiling | | Textured Coating | NOT DETECTED | |
| CORRIDOR | 193 | Under Carpet/Lino | | Not Accessed | DO NOT DISTURB | |
| CORRIDOR | 193 | Wall | Coating | Textured Coating | NOT DETECTED | |
| CORRIDOR | 193 | Water Heater | Beneath bar - within | Not Accessed | DO NOT DISTURB | |
| CORRIDOR | 193 | Other Surfaces | | Not Detected | NOT DETECTED | |
| OFFICE | 194 | Around Windows | Coating | Textured Coating | NOT DETECTED | |
| OFFICE | 194 | Fixed Ceiling | | Textured Coating | NOT DETECTED | |
| OFFICE | 194 | Heater | Low level below window | Not Accessed | DO NOT DISTURB | |

"Do not Disturb" - asbestos containing materials are present / suspected to be present. "Not Detected" - material does not contain asbestos.



| | | | |
|-------------------|--------------------|------------------------|-----------------------|
| Site: | Non HCC Properties | Unit: | THE HARLINGTON CENTRE |
| Reference: | 10008999999 | Unit Reference: | -419054012 |
| | | Building No.: | |

This register is a list of the asbestos we have found to date in the accessible areas of this building and is designed to inform those undertaking routine maintenance. It normally excludes ducts (floors and walls), floor tiles, hidden floor coverings, ceiling voids, textured coatings (Artex), putty to windows etc. If you are undertaking refurbishment works or works in areas we have not yet accessed or any area that is not specifically mentioned, you must request a survey through Property Services beforehand. See Manager's Guide for more information. If an area is marked that Access is Restricted, do not enter

| Room Title | Rm No. | Position | Details | Material Inspected | Asbestos | Access Restricted? |
|---------------------|--------|-------------------|-----------------------------------|--------------------|----------------|--------------------|
| OFFICE | 194 | Under Carpet/Lino | | Not Accessed | DO NOT DISTURB | |
| OFFICE | 194 | Wall | Coating | Textured Coating | NOT DETECTED | |
| OFFICE | 194 | Other Surfaces | | Not Detected | NOT DETECTED | |
| ACCESSIBLE WC | 195 | Above Ceiling | Coating to ceiling and walls | Textured Coating | NOT DETECTED | |
| ACCESSIBLE WC | 195 | Above Ceiling | Debris on ceiling tiles | Textured Coating | NOT DETECTED | |
| ACCESSIBLE WC | 195 | Inside Boxing | Behind toilet | Not Detected | NOT DETECTED | |
| ACCESSIBLE WC | 195 | Lino | Modern | Not Detected | NOT DETECTED | |
| ACCESSIBLE WC | 195 | Under Carpet/Lino | | Not Accessed | DO NOT DISTURB | |
| ACCESSIBLE WC | 195 | Wall Void | Behind wall panels | Not Accessed | DO NOT DISTURB | |
| ACCESSIBLE WC | 195 | Other Surfaces | | Not Detected | NOT DETECTED | |
| MEETING ROOM | 196 | Fixed Ceiling | On plasterboard | Textured Coating | NOT DETECTED | |
| MEETING ROOM | 196 | Machinery | Air conditioning unit - modern | Not Detected | NOT DETECTED | |
| MEETING ROOM | 196 | Under Carpet/Lino | | Not Accessed | DO NOT DISTURB | |
| MEETING ROOM | 196 | Wall | Coating | Textured Coating | NOT DETECTED | |
| MEETING ROOM | 196 | Other Surfaces | | Not Detected | NOT DETECTED | |
| ELECTRICAL CUPBOARD | 197 | Electrical Box | Modern | Not Detected | NOT DETECTED | |
| ELECTRICAL CUPBOARD | 197 | Pipework | Beneath mineral fibre to pipework | Not Accessed | DO NOT DISTURB | |
| ELECTRICAL CUPBOARD | 197 | Other Surfaces | | Not Detected | NOT DETECTED | |
| BAR AREA | 198 | Inside Boxing | Beneath and behind fixed units | Not Accessed | DO NOT DISTURB | |
| BAR AREA | 198 | Inside Boxing | To shutter above bar counter | Not Accessed | DO NOT DISTURB | |

"Do not Disturb" - asbestos containing materials are present / suspected to be present.

"Not Detected" - material does not contain asbestos.



| | | | |
|-------------------|--------------------|------------------------|-----------------------|
| Site: | Non HCC Properties | Unit: | THE HARLINGTON CENTRE |
| Reference: | 10008999999 | Unit Reference: | -419054012 |
| | | Building No: | |

This register is a list of the asbestos we have found to date in the accessible areas of this building and is designed to inform those undertaking routine maintenance. It normally excludes ducts (floors and walls), floor tiles, hidden floor coverings, ceiling voids, textured coatings (Artex), putty to windows etc. If you are undertaking refurbishment works or works in areas we have not yet accessed or any area that is not specifically mentioned, you must request a survey through Property Services beforehand. See Manager's Guide for more information. If an area is marked that Access is Restricted, do not enter

| Room Title | Rm No. | Position | Details | Material Inspected | Asbestos | Access Restricted? |
|------------------|--------|---------------------|--------------------------------------|--------------------|----------------|--------------------|
| BAR AREA | 198 | Lino | Modern | Not Detected | NOT DETECTED | |
| BAR AREA | 198 | Under Carpet/Lino | | Not Accessed | DO NOT DISTURB | |
| BAR AREA | 198 | Under Sink | Pad - remnants to sink and drainer | Bitumen Product | NOT DETECTED | |
| BAR AREA | 198 | Other Surfaces | | Not Detected | NOT DETECTED | |
| SERVICE CUPBOARD | 199 | Above Ceiling | Above mineral fibre insulation | Not Accessed | DO NOT DISTURB | |
| SERVICE CUPBOARD | 199 | Trunking | Within ventilation ducting | Not Accessed | DO NOT DISTURB | |
| SERVICE CUPBOARD | 199 | Other Surfaces | | Not Detected | NOT DETECTED | |
| FEMALE WC LOBBY | 200 | Above Ceiling | Coating to walls and ceiling | Textured Coating | NOT DETECTED | |
| FEMALE WC LOBBY | 200 | Lino | Modern | Not Detected | NOT DETECTED | |
| FEMALE WC LOBBY | 200 | Under Carpet/Lino | | Not Accessed | DO NOT DISTURB | |
| FEMALE WC LOBBY | 200 | Wall Void | Behind wall panels | Not Accessed | DO NOT DISTURB | |
| FEMALE WC LOBBY | 200 | Other Surfaces | | Not Detected | NOT DETECTED | |
| RISER CUPBOARD | 201 | Accessible Surfaces | | Not Detected | NOT DETECTED | |
| PLANT ROOM | 202 | Calorifier | Within | Not Accessed | DO NOT DISTURB | |
| PLANT ROOM | 202 | Electrical Box | Main control panel - modern | Not Detected | NOT DETECTED | |
| PLANT ROOM | 202 | Pipework | Beneath mineral fibre insulation | Not Accessed | DO NOT DISTURB | |
| PLANT ROOM | 202 | Pipework | Gaskets to pipe flanges - various | Composite Gasket | DO NOT DISTURB | |
| PLANT ROOM | 202 | Pipe Duct | To floor - limited access | Not Accessed | DO NOT DISTURB | |
| PLANT ROOM | 202 | Trunking | Ventilation - within | Not Accessed | DO NOT DISTURB | |
| PLANT ROOM | 202 | Trunking | Grey sealant to ventilation trunking | Putty | NOT DETECTED | |

"Do not Disturb" - asbestos containing materials are present / suspected to be present. "Not Detected" - material does not contain asbestos.



Site:

Non HCC Properties

Unit:

THE HARLINGTON CENTRE

Reference:

10008999999

Unit Reference:

-419054012

Building No:

This register is a list of the asbestos we have found to date in the accessible areas of this building and is designed to inform those undertaking routine maintenance. It normally excludes ducts (floors and walls), floor tiles, hidden floor coverings, ceiling voids, textured coatings (Artex), putty to windows etc. If you are undertaking refurbishment works or works in areas we have not yet accessed or any area that is not specifically mentioned, you must request a survey through Property Services beforehand. See Manager's Guide for more information. If an area is marked that Access is Restricted, do not enter

| Room Title | Rm No. | Position | Details | Material Inspected | Asbestos | Access Restricted? |
|--------------------|--------|-------------------|---|--------------------|----------------|--------------------|
| PLANT ROOM | 202 | Wall | Felt lining around door frame to area 203 | Bitumen Product | NOT DETECTED | |
| PLANT ROOM | 202 | Other Surfaces | | Not Detected | NOT DETECTED | |
| PLANT ROOM | 203 | Damp Proof Course | Felt lining at floor level to wall to area 202 | Bitumen Product | NOT DETECTED | |
| PLANT ROOM | 203 | Pipework | Beneath mineral fibre insulation to pipework | Not Accessed | DO NOT DISTURB | |
| PLANT ROOM | 203 | Roof Covering | Above area 202 - inaccessible, high level | Bitumen Product | DO NOT DISTURB | |
| PLANT ROOM | 203 | Roof Felt | Sarking felt - modern | Not Detected | NOT DETECTED | |
| PLANT ROOM | 203 | Trunking | Within ventilation trunking | Not Accessed | DO NOT DISTURB | |
| PLANT ROOM | 203 | Wall | Behind mineral fibre insulation | Not Accessed | DO NOT DISTURB | |
| PLANT ROOM | 203 | Wall | All surfaces to large void behind ventilation trunking - inaccessible | Not Accessed | DO NOT DISTURB | |
| PLANT ROOM | 203 | Other Surfaces | | Not Detected | NOT DETECTED | |
| ROOF SPACE VIA 203 | 204 | Floor | Limited access throughout | Not Accessed | DO NOT DISTURB | |
| ROOF SPACE VIA 203 | 204 | Roof | Sarking felt - modern | Not Detected | NOT DETECTED | |
| ROOF SPACE VIA 203 | 204 | Roof Covering | Silver covering | Bitumen Product | DO NOT DISTURB | |
| ROOF SPACE VIA 203 | 204 | Roof Felt | To floor | Bitumen Product | DO NOT DISTURB | |
| ROOF SPACE VIA 203 | 204 | Under Floor | Beneath roof coverings, wooden panelling and around flue pipes | Not Accessed | DO NOT DISTURB | |
| ROOF SPACE VIA 203 | 204 | Wall | Behind mineral fibre insulation covering to wall | Not Accessed | DO NOT DISTURB | |
| ROOF SPACE VIA 203 | 204 | Other Surfaces | | Not Detected | NOT DETECTED | |
| ROOF SPACE VIA 204 | 205 | Floor | Limited access throughout | Not Accessed | DO NOT DISTURB | |

"Do not Disturb" - asbestos containing materials are present / suspected to be present.

"Not Detected" - material does not contain asbestos.



Site:

Non HCC Properties

Unit:

THE HARLINGTON CENTRE

Reference:

10008999999

Unit Reference:

-419054012

Building No:

This register is a list of the asbestos we have found to date in the accessible areas of this building and is designed to inform those undertaking routine maintenance. It normally excludes ducts (floors and walls), floor tiles, hidden floor coverings, ceiling voids, textured coatings (Artex), putty to windows etc. If you are undertaking refurbishment works or works in areas we have not yet accessed or any area that is not specifically mentioned, you must request a survey through Property Services beforehand. See Manager's Guide for more information. If an area is marked that Access is Restricted, do not enter

| Room Title | Rm No. | Position | Details | Material Inspected | Asbestos | Access Restricted? |
|--------------------|--------|----------------|--|--------------------|----------------|--------------------|
| ROOF SPACE VIA 204 | 205 | Floor | Beneath wooden panels | Not Accessed | DO NOT DISTURB | |
| ROOF SPACE VIA 204 | 205 | Roof | Sarking felt - modern | Not Detected | NOT DETECTED | |
| ROOF SPACE VIA 204 | 205 | Roof Covering | Silver covering | Bitumen Product | NOT DETECTED | |
| ROOF SPACE VIA 204 | 205 | Roof Covering | | Bitumen Product | DO NOT DISTURB | |
| ROOF SPACE VIA 204 | 205 | Roof Felt | To floor | Bitumen Product | DO NOT DISTURB | |
| ROOF SPACE VIA 204 | 205 | Under Floor | Beneath roof coverings, wooden panelling and around flue pipes | Not Accessed | DO NOT DISTURB | |
| ROOF SPACE VIA 204 | 205 | Wall | Behind mineral fibre insulation covering to wall | Not Accessed | DO NOT DISTURB | |
| ROOF SPACE VIA 204 | 205 | Other Surfaces | | Not Detected | NOT DETECTED | |

"Do not Disturb" - asbestos containing materials are present / suspected to be present.

"Not Detected" - material does not contain asbestos.



Site: Non HCC Properties **Unit:** THE HARLINGTON CENTRE
Reference: 10008999999 **Unit Reference:** -419054012 **Building No:**

This register is a list of the asbestos we have found to date in the accessible areas of this building and is designed to inform those undertaking routine maintenance. It normally excludes ducts (floors and walls), floor tiles, hidden floor coverings, ceiling voids, textured coatings (Artex), putty to windows etc. If you are undertaking refurbishment works or works in areas we have not yet accessed or any area that is not specifically mentioned, you must request a survey through Property Services beforehand. See Manager's Guide for more information. If an area is marked that Access is Restricted, do not enter

| Room Title | Rm No. | Position | Details | Material Inspected | Asbestos | Access Restricted? |
|---------------------------|--------|-------------------|--------------------------------------|--------------------|----------------|--------------------|
| Location: External | | | | | | |
| EXTERNAL | N/A | Inside Boxing | To gas meter adjacent area 168 | Not Accessed | DO NOT DISTURB | |
| EXTERNAL | N/A | Chimney | Within | Not Accessed | DO NOT DISTURB | |
| EXTERNAL | N/A | Damp Proof Course | Low level to brickwork | Bitumen Product | NOT DETECTED | |
| EXTERNAL | N/A | Floor Duct | Various | Not Accessed | DO NOT DISTURB | |
| EXTERNAL | N/A | Roof | Various high level | Not Accessed | DO NOT DISTURB | |
| EXTERNAL | N/A | Roof Covering | Silver covering - to flat roof areas | Bitumen Product | NOT DETECTED | |
| EXTERNAL | N/A | Roof Felt | Beneath roof tiles | Not Detected | NOT DETECTED | |
| EXTERNAL | N/A | Soffits | High level | Not Accessed | DO NOT DISTURB | |
| EXTERNAL | N/A | Vent | On roof - within | Not Accessed | DO NOT DISTURB | |
| EXTERNAL | N/A | Vent | To walls | Not Accessed | DO NOT DISTURB | |
| EXTERNAL | N/A | Other Surfaces | | Not Detected | NOT DETECTED | |

"Do not Disturb" - asbestos containing materials are present / suspected to be present. "Not Detected" - material does not contain asbestos.