

October 2017

# TOWNTALK

The newsletter from Fleet Town Council

## The Harlington Development Update

It may appear that nothing has been happening since the announcement at the Annual Residents' meeting when Option 3, supported by the majority of respondents to the public consultation, was adopted as the preferred scheme to be developed to the next stage of design.

Primarily, for administrative reasons, it was proposed and agreed to proceed with a Design and Build, contractor-led delivery method under what is termed a Framework Agreement. This means the contractor selection process and the stringent requirement of a European wide tender (OJEU) had been completed by the Framework Group, called SCAPE, in this particular circumstance. It gives the pre-selected contractor exclusive rights to deliver the project, having gone through the pre-selection process, there is no further competition.

The first stage of the process is the preparation of a Feasibility Study which assesses the financial and practical delivery of the project. The Study should have been delivered at the end of July, but following requests for extensions of time the final report was only presented on 14th September 2017.

The major delay it turned out was as a consequence of the contractor not being able to deliver the project within the budget. The contractor had employed the architects and the theatre specialists who had advised the Town Council, to review the design to look at cost savings. Some significant changes were developed which improved the functionality of the building and reduced the cost of construction; still the cost was too high. The problem appears to lie in the contractor's on-costs and risk allowance.

Very recent, similar projects have been delivered at unit build prices well within the budget presented at the public exhibition. Further research shows that significant theatre projects have been delivered at total project costs within our budget. The issue therefore appears to be with the delivery model.

One issue that concerned the Town Council staff was the tendering process for the work (OJEU); it is highly bureaucratic and time consuming. Fortunately, a solution has been found. Rushmoor Borough Council has a procurement department well versed in the OJEU process and they will contract to undertake the process on behalf of the Town Council.



Produced and Published by  
Fleet Town Council  
The Harlington  
236 Fleet Road  
Fleet GU51 4BY

01252 625246  
[www.fleet-tc.gov.uk](http://www.fleet-tc.gov.uk)

 @Fleet Council  Fleet Town Council

Photography: David Fisher— Aldershot, Fleet  
& Farnham Camera Club

A conventional design, tender and construct method of delivery under the RIBA (Royal Institute of British Architects) Work Plan can be progressed. This will result in a competitive tendering process against a detailed design prepared by independent architects and engineers.

This work can be completed in discrete stages and it is proposed to proceed immediately to RIBA Stage 2 (Concept Design) which will develop the design sufficiently to submit an outline planning application. This work is projected to take three months. At the end of that period we will have a more detailed design and associated costing and have submitted the first planning application.

From this we will know if the scheme remains viable and that it meets all the requisite planning policies. All being well, we will progress to the next level of design and preparation of detailed contract documents. Failure to jump over both the hurdles will mean that it is back to the drawing board and back to the public for further consultation.

**DATES FOR YOUR DIARY - Fleet Town Council Meetings**  
 A full list of Fleet Town Council meeting dates is available at [www.fleet-tc.gov.uk](http://www.fleet-tc.gov.uk)

October	November	December	January	February
4 - Council Meeting	1 - Council Meeting	6 - Council Meeting	3 - Council Meeting	7 - Council Meeting
9 - Planning Meeting	13 - Planning Meeting	11 - Planning Meeting	8 - Planning Meeting	12 - Planning Meeting
16 - Policy & Finance	27 - Planning Meeting	20 - RLA Meeting	22 - Planning Meeting	19 - Policy & Finance
23 - Planning Meeting				26 - Planning Meeting

**Tennis Membership - Play for just £38 a year**

Play Tennis for just £38 per year! The membership fee entitles you and your household to a unique 4 digit code that can be used to access the Courts after making a reservation online (for which there will be no charge). You can play as much as you like for an entire year!

To register please visit [www.calthorpeparktennis.com](http://www.calthorpeparktennis.com) and set up an account. You can then pay the membership fee and start playing! For those who only wish to play a game or two 'Pay to Play' Tennis is also available at £6.15 per court per hour.



**Fleet Tennis League**

The LTA, in partnership with Local Tennis League's also run a Tennis League in Fleet. The league involve adults of similar abilities playing friendly singles matches when and where it suits them. Results are submitted online and players can move into a different box in the league to play new players in the next round.  
[www.localtennisleagues.com](http://www.localtennisleagues.com)



**Tennis Coaching**

Tennis Coaching for both youths and adults is also available provided by GD Tennis.  
 Tel: 01189477885 or Email: [info@gdtennis.co.uk](mailto:info@gdtennis.co.uk)

**Sept - Dec 2017 Classes**

**Red Tennis Stage (5-8yrs)**

Mini Tennis Red Sunday 09:00 – 10:00

**Orange Tennis Stage (9-10yrs)**

Mini Tennis Orange/Green Sunday 10:00 – 11:00

**Adult Coaching**

Adult Beginners / Improvers Sunday 11:00 – 12:00



**Hart Local Plan**

**Background**

The Local Plan will guide development in the district up to 2032. The Draft Local Plan contains planning policies and site allocations, including where new housing and employment development will take place.

**Progress**

Work on the Hart Local Plan is still underway – Hart held a consultation earlier this year on Strategy and Sites – responses are currently being evaluated and will be used to inform the next stage of the preparation of the Local Plan which will be published later this year. Hart are aiming to submit the Local Plan for independent examination by the Planning Inspectorate in the Spring of 2018.

**You can view the Draft Hart Local Plan at [www.hart.gov.uk/draft-local-plan](http://www.hart.gov.uk/draft-local-plan)**

**New Planning System at Hart**

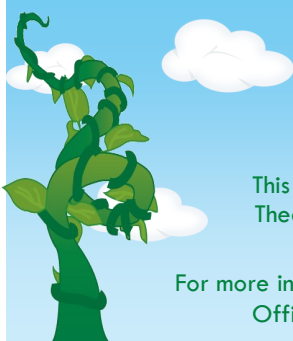
Hart District Council has introduced a new planning system. Hart currently processes over 1,600 planning applications a year, resulting in around 18,000 letters being sent to neighbouring residents notifying them of the application and giving them the chance to submit comments or objections.

Hart Council currently exceeds its statutory obligations by sending out letters. With the new system, letters will no longer be sent out but residents can instead sign up and register their details to receive email notifications of any planning applications in their area.

By no longer sending letters the council can save an estimated £16,500 and 36,000 sheets of paper per annum. To support the new system the Council has also introduced a new site notice that will be bright green and placed in a prominent location around an application site.

[www.hart.gov.uk/planning-applications](http://www.hart.gov.uk/planning-applications)





## JACK AND THE BEANSTALK

Show Dates: 13th - 24th December  
\* Tiered Seating \*

This year's panto, 'Jack and the Beanstalk', written by Peter Denyer is being produced by Starburst Theatre. Starburst Theatre produce fantastic NODA award winning shows with all profits from their productions going to the Starburst Charity that helps local children with special needs.

For more information or to book your tickets visit [www.theharlington.co.uk](http://www.theharlington.co.uk) or alternatively you can call the Box Office on 01252 811009. The Box Office is open Mon-Fri 10am-5pm or Saturday 10am-3pm.

## CHRISTMAS LIGHT SWITCH-ON

### Wednesday 29th November

The Christmas Lights in Fleet Road, provided by Fleet Town Council, will be switched on at The Christmas Festival taking place on Wednesday 29th November from 3pm till 9pm.

On the high street there will be a Christmas Market starting at 3pm as well as a free children's craft marquee, fun fair attractions and the amazing Giant Snow Globe.

In Gurkha Square there will be a variety of community stalls as well as the main community stage on which school/local choirs will be singing, Santa will make an appearance and the cast of this year's pantomime, Jack and the Beanstalk, will switch on the lights at 6.30pm.

If you're cold on the night why not visit The Harlington Café for mince pies, mulled wine and other festive treats!! If you haven't yet booked tickets to Jack and the Beanstalk The Harlington Box Office will also be open!

The Harlington will also be hosting Santa's Winter Workshop where you can meet Santa! His elves are currently busy planning and will have more details for you shortly!

Christmas Festival Website [www.fleetchristmasfestival.org](http://www.fleetchristmasfestival.org)





We would like to say a massive thank you to : Natta for kindly sponsoring this year's Christmas Tree in Gurkha Square, Cedardale for their professional service and for once again agreeing to undertake the installation of the Christmas Tree, W.C. Baker & Son for their invaluable help, Hart District Council for allowing the tree pride of place in the square and to the Christmas Festival Committee.







### *Christmas Nutcracker Trail*



The newly formed Fleet Business Improvement District (BID) are arranging a Nutcracker Trail in the weeks leading up to Christmas, to encourage people to come into the town. This has been made possible thanks to a contribution from Fleet Town Council.

10 Nutcrackers (6ft tall figures) will be positioned in locations around the Town Centre for a period of 6 weeks launching on 2nd Dec as a part of Small Business Saturday. The trail is perfect for keeping the whole family entertained and in the festive spirit. Find all 10 Nutcrackers to be in with a chance of winning an iPad mini. The Nutcrackers can be hunted down using specially designed Nutcracker Booklets - look out for the booklets coming through your letterbox or pick them up in the Town Centre. The booklets contain a map of the BID district which shows the location of the Nutcracker, a colouring-in page and of course the all important Trail Sheet to complete. More information will be available shortly at [www.fleet-bid.co.uk](http://www.fleet-bid.co.uk)

## Making a Difference...

### *Christmas Day Lunch - for those otherwise spending the day alone*

After last year's success, Fleet Town Council & Churches Together in Fleet will once again be arranging a free Christmas Day Lunch at The Harlington, Fleet, for those in Fleet/Church Crookham area who would otherwise be spending the day alone.

If you would like to attend/are interested in attending then please contact us on Tel: 01252 625246 or Email: [charlotte.benham@fleet-tc.gov.uk](mailto:charlotte.benham@fleet-tc.gov.uk) as places will be reserved on a first come first served basis.



We would like to once again thank all of last year's wonderful volunteers and generous sponsors; The Harlington/Fleet Town Council, Waitrose, Tesco, Morrison's, The Heron on the Lake, Café Lusso, CH Cleaning Services, This N That, W.C. Baker & Son, Furney Copse Farm, Fleet Crondall and Crookham Welfare Trust, Serendipity, Salamandar Gifts and last but not least many members of the community.

This year we will be asking for donations to cover costs such as hiring in a chef, food & drink and small gifts.

If anyone would like to make a donation then these can be handed in to Fleet Town Council (The Harlington, 236 Fleet Road, Fleet, GU51 4BY).

### *Community Governance Review - Ward Arrangements*

#### **Background information**

The Local Government Boundary Commission for England (LGBCE) completed a review of Hampshire County Council electoral divisions in December 2016.

As a consequential change this created 2 new parish wards for Fleet Town Council (FTC) i.e. Court Manor and Wickham each with 1 councillor. It also changed the existing parish ward boundaries to follow the existing district wards and the new county divisions. These new wards will come into effect from May 2018. FTC wrote to Hart District Council (HDC) and asked that this new arrangement be reviewed and changed. FTC proposed a different arrangement of 5 wards with a more even distribution of councillors per ward and a reduction in the overall number of councillors from 19 to 18.

#### **The Consultation Outcome**

HDC held a Consultation on the Community Governance Review during March - June 2017 and the responses that they received have been in favour of the FTC proposals. At a Council meeting on the 28th September HDC resolved to support FTC's proposals, make a request to the Local Government Boundary Commission for England to amend the proposed scheme that is due to come into effect in May 2018 to reflect the Fleet Town Council proposals and to make amendments to the electoral register with effect from the 1st December 2017, that will enable the delivery of elections on the new boundaries from that date.

[www.hart.gov.uk](http://www.hart.gov.uk)

### *Calthorpe Park Improvements*

There have been a variety of improvement works in Calthorpe Park including: new bollards, 6 benches alongside the tennis courts and 6 benches inside the courts, all installed by community payback. New bike railings and 2 new car parking spaces next to the Courts have also been added.



### *Oakley Park*

A bridge at Oakley Park has been replaced with a new non-slip version allowing access across the stream to



the island. This was completed by our Facilities and Open Spaces Manager with the help of Mr Mitchell Kirk, a volunteer. The bridge has been well used already and a lot of positive comments received.

### *Fleet Cemetery - grave ownership*

If you are the owner of a grave/plot at Fleet Cemetery and you change address, please contact the Cemetery Clerk to update your records.

If you know of an owner of a grave/plot who has passed away, please contact the Cemetery Clerk so arrangements can be made i.e. transferring the ownership.

Tel: 07880722941 / 01252 625246

Email: [cemetery.clerk@fleet-tc.gov.uk](mailto:cemetery.clerk@fleet-tc.gov.uk)



### *Dates for your Diary*



- Firework Fiesta - 4th November 2017
- Remembrance Sunday - 12th November 2017
- Christmas Festival - 29th November 2017
- Annual Residents' Meeting - 27th March 2018
- Half Marathon - 18th March 2018
- Fleet Carnival - 6th to 8th July 2018

**Fleet Town Council's Offices will be closed for Christmas from 1pm on Friday 22nd December to 9am on Tuesday 2nd January. If you have any urgent enquires during this time, please contact The Harlington on 01252 811009.**



## ... to the local community

### *New Defibrillators at Ancells, Calthorpe & Oakley - Thank you to...*

...Fleet and Church Crookham Community Responders, Friends of Oakley Park, Friends of Ancells Farm, W.C. Baker & son, Fleet Cricket Club and Fleet Hospital & Community Friends for their support and contributions.

The new defibrillators can be found at the pavilion in Oakley Park, the Cricket Pavilion in Calthorpe Park and the Community Centre at Ancells Farm. The code to access the defibrillator in Oakley is provided on the box, the defibrillators at Ancells Community Centre and Calthorpe Park do not require a code. The defibrillator will talk you through what you need to do and will not allow you to administer a shock unless it is required.



### *Firework Fiesta*

**Saturday 4th November**

Calthorpe Park, off Reading Road North  
Gates open at 5pm with the show set to start around 6:30pm.

Tickets available from Serendipity or from Lions in the Hart Shopping Centre on 14/21/28 Nov, 9.30am - 4pm and 4 Nov, 9am - 2pm. Tickets are also available online - visit [www.fleetlions.org.uk/fireworks](http://www.fleetlions.org.uk/fireworks) for details.



### *Remembrance Day*

**Sunday 12th November**

There will be Two Minutes Silence at the Gurkha Square War Memorial at 11am.

This year the Service of Remembrance will be held at The Harlington with a Parade taking place directly after the service (more details to follow shortly). The wreaths will then be laid in Gurkha Square.

Fleet Town Council will once again host refreshments in The Harlington for those on parade and the general public.



### *Fleet Cemetery Improvements*

Fleet Cemetery has undergone some recent improvement works. Our grounds maintenance team has completed the final planting around the central shelter. Rose trees and additional shrubs have been added as well as more trees along the central pathway, from the main gate and down towards the new Garden of Remembrance area. The cemetery is looking much tidier due to the combined efforts of the grounds maintenance team, the friends of group and local groups such as the 1st Crookham Scouts.



### *Locations of Defibrillators in Fleet*

Defibrillator locations are something everyone should be aware of in an emergency. Below you'll find a list of all the defibrillators in Fleet. The 2017 Fleet Guide also has locations (as at July 17) plotted on a map.

- Hart Shopping Centre
- Courtmoor School
- Velmead Junior School
- Outside most Doctors Surgeries
- Outside 22 Barbara Close, Church Crookham
- Ancells Farm Community Centre - 24/7
- Oakley Park (Pavilion) - 24/7
- Calthorpe Park (Cricket Club) - 24/7
- Hart District Council Offices - 24/7
- Fleet Motorway Services - 24/7
- Dentist (Elvetham Rd) - 24/7
- Prince of Wales Pub - 24/7
- Elvetham Heath Community Centre - 24/7
- Hart Leisure Centre - 24/7
- W.C. Baker & Son (Fleet Road) - 24/7
- Fleet Railway Station - 24/7
- Outside 66 Church Road Fleet - 24/7



### **DOWNLOAD THE APP**

South Central Ambulance Service has an amazing app for smartphones/tablets that uses GPS to **show you the nearest Defibrillator (AED)** as well as a list of others in the area. There's also videos and CPR instructions.

Search  
'Save a Life'  
on the app  
store.



### *Bloom-in' Marvellous - South & South East in Bloom Awards Win*

At the Award Ceremony for South and South East in Bloom, Fleet Town Council's Parks won awards in several categories:

*Small Conservation* - both Oakley Park and Basingbourne Park were awarded Silver Gilt

*Small Park* - Oakley Park was awarded Gold and Basingbourne was awarded Silver Gilt

*Small Cemetery* - Fleet Cemetery was awarded Silver Gilt

The Friends of Ancells Farm were awarded "Thriving" and The Friends of Basingbourne Park were awarded the highest level "Outstanding" in the 'It's your Neighbourhood' category.

We'd like to say a massive thank you to the Friends of Groups and to our grounds maintenance team for all their hard work.



# What's on at The Harlington



## STAND UP FOR SATURDAY



### COMEDY CLUB

Featuring the top acts from the UK comedy circuit

Tickets £12.00 in advance £14.00 on the door

Christmas Comedy Tickets £17.50

### SATURDAY

18th November  
2nd December  
20th January

Show: 8:30pm



### A Social Cinema Group showing award winning films from around the world

Tickets available on the door £6

Membership available - £45 / year  
Information visit [www.fleetfilm.co.uk](http://www.fleetfilm.co.uk)

### MONDAY

23rd October  
13th & 27th November  
8th & 22nd January

Starts: 8:00pm



### Featuring some of Britain's finest Jazz musicians

3rd Tuesday of the month

Please visit [www.theharlington.co.uk](http://www.theharlington.co.uk) for prices

### TUESDAY

14th November  
5th December  
16th January

Show: 8:00pm



### Monthly Roller Disco

Tickets just £5 per person (including skate hire).  
Purchase on the door only.

Bar open with snacks available.

For more information visit [www.discoskate.co.uk](http://www.discoskate.co.uk)

### FRIDAY

17th November  
19th January

Time: 6 - 9pm



Selling Fast!

### Lee Nelson : Serious Joker

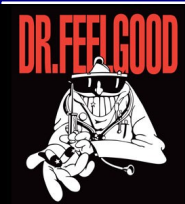
You've seen him sneaking into places he shouldn't be, now come and see him where he most definitely should be: live on stage with his sensational Serious Joker Tour!

Tickets: £20.00 Reserved Seating

### FRIDAY

27th October

Show: 7:30pm



### DR. FEELGOOD

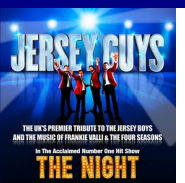
Formed on Canvey Island in Essex in the early 1970s Dr. Feelgood remains one of the most popular and exciting live rhythm and blues acts in the world.

Tickets: £18.00 General Admission Unreserved and Standing

### SATURDAY

28th October

Show: 8:00pm



### JERSEY GUYS

UK's foremost tribute to the Jersey Boys and the music of Frankie Valli and the Four Seasons. With all the classic moves, sounds and costumes from the glory days of Rock and Roll this show has audiences beggin' for more!

Tickets: £22.50 Adult / £20.00 Concs Reserved Seating

### SUNDAY

29th October

Show: 7:30pm



### T ★ REXTASY

T.rextasy are celebrating Marc's life and works with a very special commemorative tour. Truly a rock'n'roll concert for all ages - If you would like to know exactly what a Marc Bolan concert was like in the 1970s, this show is for you!

Tickets: £19.00 Seating / £15.00 Standing

### FRIDAY

3rd November

Show: 8:30pm

Box Office: 01252 811009 [www.theharlington.co.uk](http://www.theharlington.co.uk)

	<p><b>Prince Revelation</b></p> <p>Mark Anthony is the No.1 Prince tribute in the world. This show will feature some of those massive hit records...Purple Rain, Little Red Corvette, Let's Go Crazy, Kiss, 1999, 7, When Doves Cry, Sign Of The Times, the list goes on and on...</p> <p>Tickets: £20.00 Concert Standing</p>	<p><b>Saturday</b></p> <p><b>11th November</b></p> <p>Show: 8:30pm</p>
	<p><b>GENESIS CONNECTED</b></p> <p>Genesis Connected is a UK tribute show celebrating the music of Genesis and the biggest selling acts connected: Peter Gabriel, Phil Collins and Mike &amp; the Mechanics.</p> <p>Tickets: £16.50 Seating / £14.00 Standing</p>	<p><b>FRIDAY</b></p> <p><b>24th November</b></p> <p>Show: 8:30pm</p>
	<p><b>The CUBAN Brothers</b></p> <p>Welcome to the craziest party you've ever been to... Cuban style!! Festival favourites, The Cuban Brothers are the only act that truly combines music, comedy and dancing for the more discerning crowd.</p> <p>Tickets: £16.00 Concert Standing</p>	<p><b>SATURDAY</b></p> <p><b>25th November</b></p> <p>Show: 8:45pm</p>
	<p><b>MAINLY MADNESS Christmas Party</b></p> <p>Back by popular demand for the sixth year running the Mainly Madness Annual Christmas Party is a night not to be missed. A tribute to Madness and a celebration of 2 tone and ska.</p> <p>Tickets: £16.50 Reserved Seating / £14.00 Standing</p>	<p><b>FRIDAY</b></p> <p><b>1st December</b></p> <p>Show: 8:30pm</p>
	<p><b>THE ROCKY HORROR PICTURE SHOW</b></p> <p><b>!!SING ALONG!!</b></p> <p>The 1975 cult classic with interactive props and on-screen lyrics so everyone can join in. Fancy dress is not obligatory but highly recommended!</p> <p>Tickets: £15.00 Reserved Tiered Theatre</p>	<p><b>TUESDAY</b></p> <p><b>19th December</b></p> <p>Show: 8:00pm</p>
	<p><b>DOUBLE HEADER: Catfish   NORTHSYDE</b></p> <p><b>Catfish:</b> British Blues Award winners Catfish have carved a reputation for themselves as an excellent live band with a phenomenal frontman, Matt Long.</p> <p><b>Northsyde:</b> British Blues Awards finalists. A heady mix of soulful Blues, shaking Funk, and Zep-style riffing.</p> <p>Tickets: £12.00 Cabaret Unreserved / Standing</p>	<p><b>FRIDAY</b></p> <p><b>12th January</b></p> <p>Show: 8:00pm</p>

## Courses and Classes

The Harlington offers a wide range of Courses and Classes including:

- \* **Len Tyler Music School** [www.lentylermusicschool.co.uk](http://www.lentylermusicschool.co.uk)  
For children from birth to age 9
- \* **Rock Choir** [www.rockchoir.com](http://www.rockchoir.com)
- \* **Ceroc** [www.cerocplus.co.uk](http://www.cerocplus.co.uk)  
A fusion of Salsa/Ballroom/Hip Hop/Tango/Jive
- \* **Funtime Dance and Drama**  
Children and adult classes throughout the week  
[www.funtimedanceanddrama.co.uk](http://www.funtimedanceanddrama.co.uk)

A full list of Courses and Classes can be found at:  
[www.theharlington.co.uk](http://www.theharlington.co.uk)

## Venue Hire

Fleet Town Council offers two very different community venues that can be hired out:

- |   |  |
|---|--|
| <p><b>The Harlington</b></p> <ul style="list-style-type: none"> <li>-Main hall seats up to 300 or 500 standing</li> <li>-Many differently sized rooms available for hire &amp; a fully licensed bar</li> <li>-Purpose built Dance Studio</li> <li>-Home to regular music, drama, fitness &amp; dance classes</li> </ul> | <p><b>Ancells Farm Community Centre</b></p> <ul style="list-style-type: none"> <li>-Main hall can be divided to meet user needs</li> <li>-Meeting rooms &amp; outside garden</li> <li>-Home to a local preschool, dance academy, Beavers/Cubs/Scouts as well as sports, fitness and dance classes</li> </ul> |
|---|--|

For availability or more info please call: 01252 811009 or visit [www.theharlington.co.uk](http://www.theharlington.co.uk)





### *Fleet Neighbourhood Plan - An Update*

Work has been progressing steadily on the Neighbourhood Plan for Fleet. We are aiming to submit the plan to Hart District Council by the end of this year, in order for a public consultation to be held this Winter. After the consultation has taken place, and residents comments have been addressed, the plan will be submitted for examination. Final amendments will then be made before going to referendum. With the support of residents the decision to 'adopt the Neighbourhood Plan' will be taken by Hart District Council in Autumn 2018.

### *Some FLEETing thoughts from the Chair*

It has been interesting doing some research for the Neighbourhood Plan, to see just how much Fleet has grown over the years. The town has never incrementally grown, it has expanded through the addition of estates since before the Second World War. The Tavistock area is a 1960's estate, the Dinorben area is an estate, in fact most of the development either side of Reading Road South is represented by estate development.

The Fleet Characterisation Study identifies estates in every part of Fleet from virtually every decade. However, the nature of estates is changing, the houses all used to look the same, or very similar, now nearly every house is different. Estates often had wide grass verges and substantial front gardens, which have diminished to the point that the newest developments like Edenbrook and QEB have no front gardens at all and the rear gardens are shrinking year by the year.

The next generation estate at Hartland Village (Pyestock) will, for the majority of residents have no private garden at all, because over half the population will be living above ground level in four and five storey blocks of flats. Building density in parts of the "Blue Triangle" built in the 1930s is five units per hectare, whereas the densest part of Hartland Village will be over one hundred units per hectare.

A recent newspaper article said the modern generation no longer needed the space just to store "stuff". You don't need shelves and cupboards for your record collections or your personal library, you just need a good internet connection and it all comes to you on your phone or your tablet, and I don't mean the ones you get from your doctors that it takes around two weeks to get an appointment for!

The one good thing about the significant increase in housing numbers is the supporting infrastructure that comes with development; the new schools, roads, medical and leisure facilities!!!!!!

Have you noticed that every new estate starts or ends, depending which way you are going, with a roundabout. The theory is that as you leave the estate you can potentially turn in two or three directions and then you are dispersed onto the wider road network and therefore there is no need for further road improvements. It even has a name "passive traffic management."

Fleet was once described to me as an island, because every major access to the town crosses a bridge. How many new bridges have we had in the last 50 years to accommodate the increased traffic flows generated by our new estates? Makes me sound like a grumpy old man – "things ain't what they used to be."

Despite all the changes, Fleet remains a good healthy place to live, it is green, our trees are doing their bit to control climate change. We have Fleet Pond and the Basingstoke Canal and a fine selection of small parks, three of which just won gold or silver awards in the South and South East in Bloom competition. We have a healthy high street that bustles with activity every day of the week. It has changed and the shops have changed, but so has the whole retail sector affected by good internet access.

We have a variety of community functions like the Annual Carnival, the Firework Fiesta, the Half Marathon, the Christmas and Food Festivals which are supported by the Town Council, but organised and managed by a band of wonderful volunteers who work really hard to help make our town special. To every one of them - "thank you."

As this will be the last Town Talk this year, I would like to take the opportunity, on behalf of the Councillors and Staff to wish you a Very Happy Christmas and a Peaceful New Year.



*Bob Schofield  
FTC Chairman*

### *New Councillors*

At the Full Council meeting in June, Fleet Town Council co-opted 4 new members; Michael Peddell, Luke Wood, Sharyn Wheale and George Woods, meaning all 19 positions are now full. You can find details of all Fleet Town Councillors and which ward they represent on the next page.



## Your Councillors

### Ancells Ward

Cllr Neil Walton Tel: 01252 504030  
neil.walton@fleet-tc.gov.uk

Cllr Jonathan Wright Tel: 07909797167  
jonathan.wright@fleet-tc.gov.uk

### Calthorpe Ward

Cllr Grahame Chenery Tel: 01252 617033  
grahame.chenery@fleet-tc.gov.uk

Cllr Leslie Holt Tel: 01252 624814  
leslie.holt@fleet-tc.gov.uk

Cllr Richard Hunt Tel: 07803214280  
richard.hunt@fleet-tc.gov.uk

Cllr George Woods Tel: 07966138416  
george.woods@fleet-tc.gov.uk

### Courtmoor Ward

Cllr Alex Gray Tel 07919 440226  
alex.gray@fleet-tc.gov.uk

Cllr Sharyn Wheale Tel: 01252 616080  
sharyn.wheale@fleet-tc.gov.uk

### Fleet Central Ward

Cllr Denis Gotel Tel: 01252 614648  
denis.gotel@fleet-tc.gov.uk

Cllr Alan Hope Tel: 07946 292557  
alan.hope@fleet-tc.gov.uk

Cllr Alan Oliver Tel: 01252 679235  
alan.oliver@fleet-tc.gov.uk

Cllr Richard Robinson Tel: 01252 614590  
richard.robinson@fleet-tc.gov.uk

Cllr Paul Einchcomb Tel: 01252 662720  
paul.einchcomb@fleet-tc.gov.uk

Cllr Luke Wood Tel: 07958411637  
luke.wood@fleet-tc.gov.uk

Cllr Michael Peddell Tel: 01252 625246 (FTC)  
michael.peddell@fleet-tc.gov.uk

### Pondtail Ward

Cllr Kathy Jasper Tel: 01252 629667  
kathy.jasper@fleet-tc.gov.uk

Cllr Dai Pierce Tel: 01252 621408  
dai.pierce@fleet-tc.gov.uk

Cllr Bob Schofield Tel: 01252 621373  
CHAIRMAN OF THE COUNCIL  
bob.schofield@fleet-tc.gov.uk

Cllr Jeff Smith Tel: 07581 537516  
jeff.smith@fleet-tc.gov.uk



## What is Fleet Town Council responsible for?

- Ancells Farm Community Centre
- Cemeteries and Burials
- Christmas Lights
- Floral Displays
- Grants
- The Harlington
- The Harlington Coffee Shop
- Parks & Play Equipment at: Ancells Farm, Basingbourne, Calthorpe, Oakley Park, Edenbrook & The Views
- Pavilions at: Ancells Farm, Calthorpe, Basingbourne, and Oakley Park
- Planning Application Consultations
- Annual Residents' Meeting
- Skate Park at The Views
- Tennis Courts in Calthorpe Park
- War Memorial
- Football Pitches
- Notice Boards

### Hart District Council

- Abandoned Vehicles
- Building Control
- Bus Permits
- CCTV
- Car Parks and Fines
- Council Tax Enquiries
- Electoral Registration
- Gypsies and Travellers
- Housing / Homelessness
- Fly Tipping
- Licensing
- Noise Pollution
- Pest Control
- Planning
- Recycling / Refuse / Special Collections
- Street Cleaning / Litter
- Taxi / Private Hire Licensing

### Hampshire County Council

- Education  
Pre-school, Infant, Junior, Secondary, Further, Higher and Adult
- Environment
- Highways and Footways
- Libraries
- Minerals
- Social Services—Adult/Children
- Street Lighting
- Trading Standards
- Transport
- Waste Disposal

## Useful Telephone Numbers .....

Ancells Com Centre	07702 834701	Frimley Park Hospital	01276 604604
Basingstoke Hospital	01256 473202	<b>The Harlington</b>	<b>01252 811009</b>
Birth/Death/ Marriage Reg	0300 555 1392	Hart District Council	01252 622122
Bus Permits	0300 555 1376	Hart Leisure Centre	0333 005 0134
Citizens Advice Bureau	03444 111 306	Hart Shopping Centre	01252 811834
Council Tax	01252 774444	Hart Voluntary Action	01252 815652
Electoral Registration	01252 774077	Library	0300 555 1387
Fleet Cemetery	01252 625246/ 07880 722941	MP – Ranil Jayawardena	01256 702468
Fleet Link Bus Service	01252 518090	Police	101
<b>Fleet Town Council</b>	<b>01252 625246</b>	Refuse	01252 622122
Hants County Council	0300 555 1375		



### *Friends of Oakley Park*

"Many thanks to all our Friends of Oakley Park (FoOP) members and those who have donated. Your donations allow us to continue to maintain and improve the park as well as run events." - FoOP

The latest addition is a new large picnic bench which the FoOP have done a superb job of installing.



### *Friends of Ancells Farm*

The Friends of Ancells Farm (FoAF) has been granted 130 saplings from the Woodland Trust.

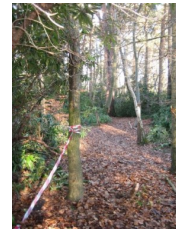
During November the FoAF will be planting these to fill in the gaps between the banks of hedges, to make the boundary safer at the play park end of the park.



### *Friends of Basingbourne Park*

The Friends of Basingbourne Park (FoBP) have been successful in a £1000 grant from County Councillor John Bennisson - this grant will go into a fund towards an Over 8's Playground.

The FoBP have also received a £1000 grant from TAG (Farnborough Airport) to support woodland trail improvements.



## Transport in Hart

Fleet Town Council is a member of a Group founded to establish whether there are ways of increasing the amount of road transport available and to see if there are better ways of integrating buses, trains, and Community Transport. The Group includes the 21 Town and Parish Councils, along with the 7 Voluntary Care Groups and the current Community Transport operators.

If Hampshire County Council's currently planned budget reductions remain unaltered, the Stagecoach bus service No. 7 as an example, could be at risk from as early as 1 April 2018. In addition, the withdrawal of subsidy from Community Transport would affect the Fleet Link, which currently receives 50% funding from Hampshire County Council.

There may be ways of creating more Community Transport operations to help alleviate the loss of bus routes, but people would not be able to use bus passes and the services may not be so frequent.

We need your help to understand what your needs are, so that we can explore what options may be available, so please take a few minutes to complete this simple survey - **survey on page 12.**

It is only by receiving the completed surveys that we will be in a position to try and get the best possible road transport arrangements for Fleet within the funds available.

Residents of Fleet are therefore asked to complete the survey online at [www.surveymonkey.co.uk/r/HartTransport2017](http://www.surveymonkey.co.uk/r/HartTransport2017) or post / bring back the completed form to The Harlington reception. (The Harlington, 236 Fleet Road, Fleet, Hants, GU51 4BY)

**This survey will be open until 30 November 2017.**

### **Interested in volunteering?**

In the future it is likely that Community Transport schemes will need to make more use of volunteers as drivers or people to take bookings. Please let us know if you might be interested in helping in some way. Please leave your details with: Chris Cornwell Telephone: 01252 843251 or Email: [transportinhart@gmail.com](mailto:transportinhart@gmail.com)





# Transport in Hart Survey



**Please fold in half and return**

*by*

**30th November 2017**

*by*

**post / dropping in**

*to*

**Fleet Town Council, The Harlington,  
236 Fleet Road, Fleet, GU51 4BY**

## TRANSPORT IN HART SURVEY

1. **Your Postcode** (we need this to know from where you normally start your journey)

2. **Do you have a car, van, motorcycle or scooter available at home for your use?**

- Yes at all times     Not during the day     Never

3. **If you make a journey by train, how do you travel to and from the station?**

- Car/ Van (driver or passenger)     Motorcycle/Scooter     Other  
 Bus     Pedal/cycle (inc. electric)  
 Taxi     Walk

4. **If you commute by rail, from which station do you travel?**

- Farnborough (Main)     Blackwater     Other (specify)  
 Fleet     Hook  
 Winchfield

5. **What journeys would you like to make that you cannot currently make by public/community transport?**

**To where do you need to travel? (See lists below table for options - write no. of option in relevant box)**

	Destination	Reason for Travel	How often would you make this journey	How much would you be prepared to pay for this journey (single)
Journey 1				
Journey 2				
Journey 3				

- Destination:** 1 - Aldershot    5 - Farnborough    9 - Fleet Town Centre    13 - Meadows Shopping Centre  
2 - Basingstoke    6 - Farnham    10 - Frimley Park Hospital    14 - Winchfield Station  
3 - Church Crookham    7 - Fleet Hospital    11 - Hartley Wintney    15 - Yateley  
4 - Elvetham Heath Centre    8 - Fleet Station    12 - Hook

**Reason for Travel:**

- 1) Leisure/entertainment    2) Medical    3) Shopping/services    4) Visiting friends or social    5) Work    6) School/College

**How often would you make this journey:**

- 1) Three or more times/week    2) At least once/week    3) At least twice/month    4) Monthly    5) Less than once/month

**How much would you be prepared to pay for this journey (single):**

- 1) £1-£1.99    2) £2-£2.99    3) £3-£10    4) More than £10

6. **Are you:**

- A student     A commuter to work     Retired     Other (specify)

7. **Is there anything else you'd like to tell us?**

8. **If you would like to be kept up to date with developments, please provide a contact email/telephone number.**