

HARLINGTON CENTRE

REVISED OPTIONS

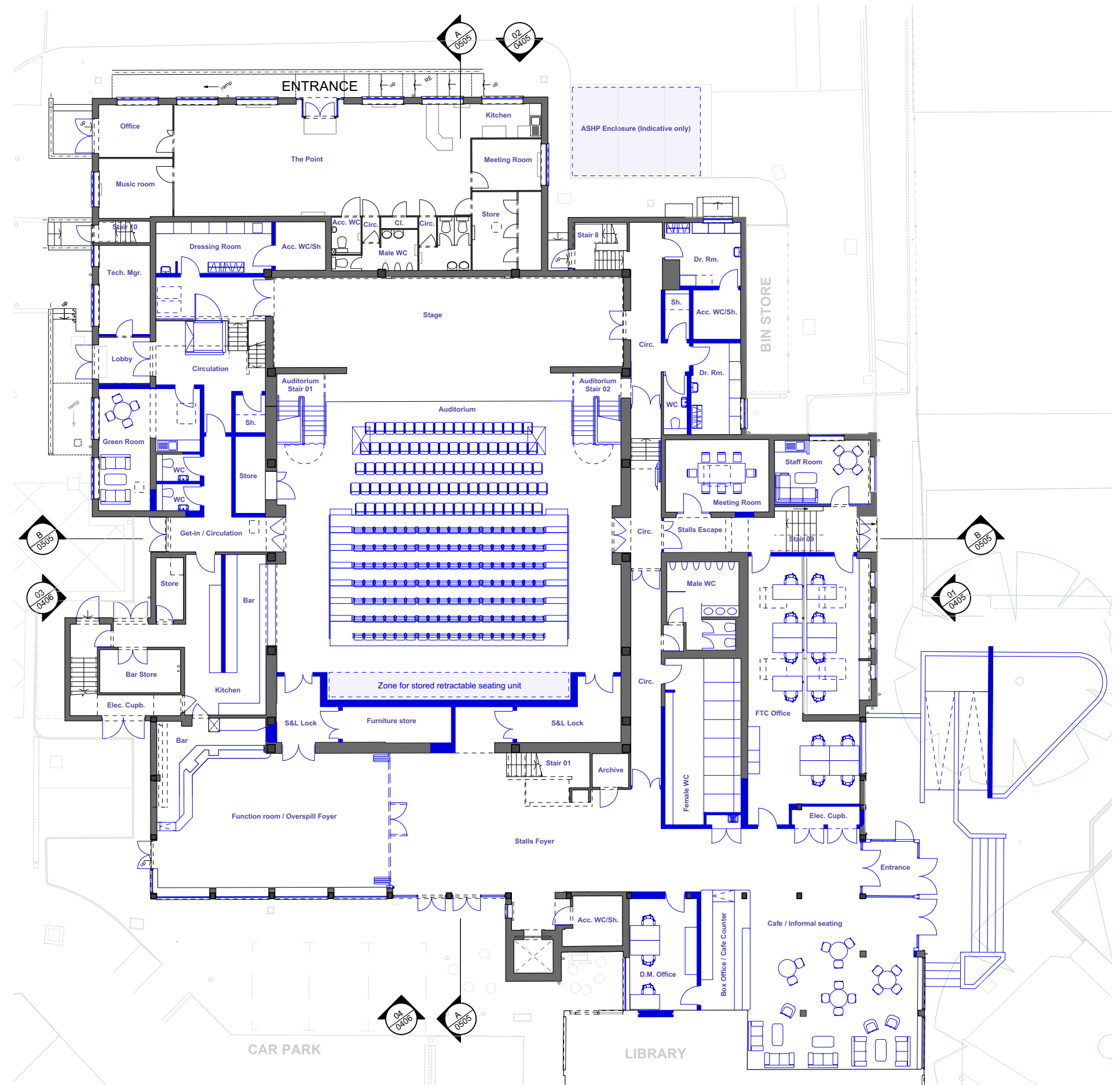
15 SEPTEMBER 2025

BURRELL | FOLEY | FISCHER
ARCHITECTS AND URBAN DESIGNERS

Retained FOH stair

Ground floor - Option 1A/1B

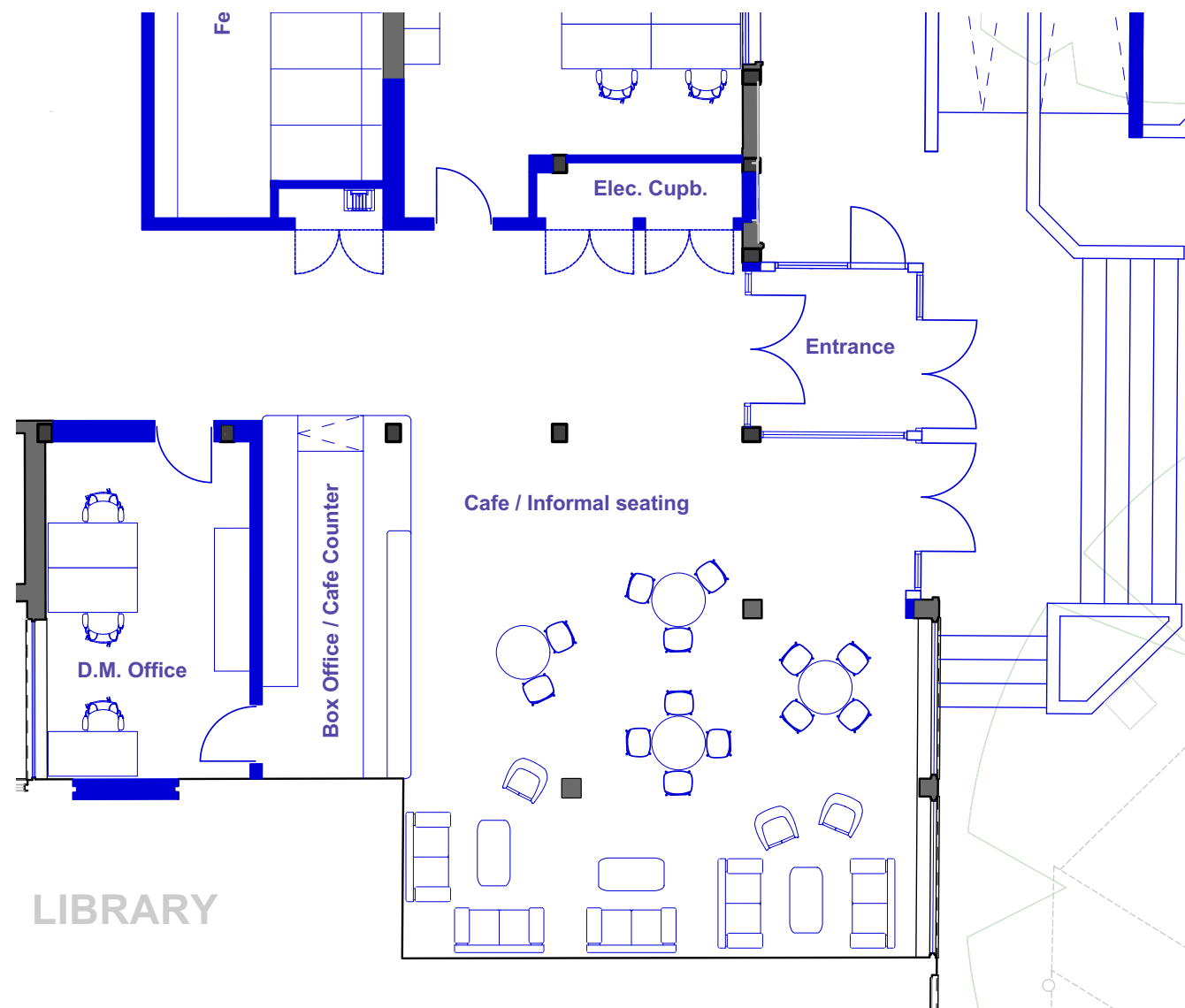
- Lowest cost option as existing front of house stair is retained.
- Additional female WCs are introduced (but at the expense of one of the accessible WCs).
- Staff office remains split level.
- Get-in arrangement remains as existing. Lifting platform in front of the stage could be included (not currently shown).
- Remodelled entrance, Gurkha Square facade works and localised landscaping. Compliant entrance ramp provided.



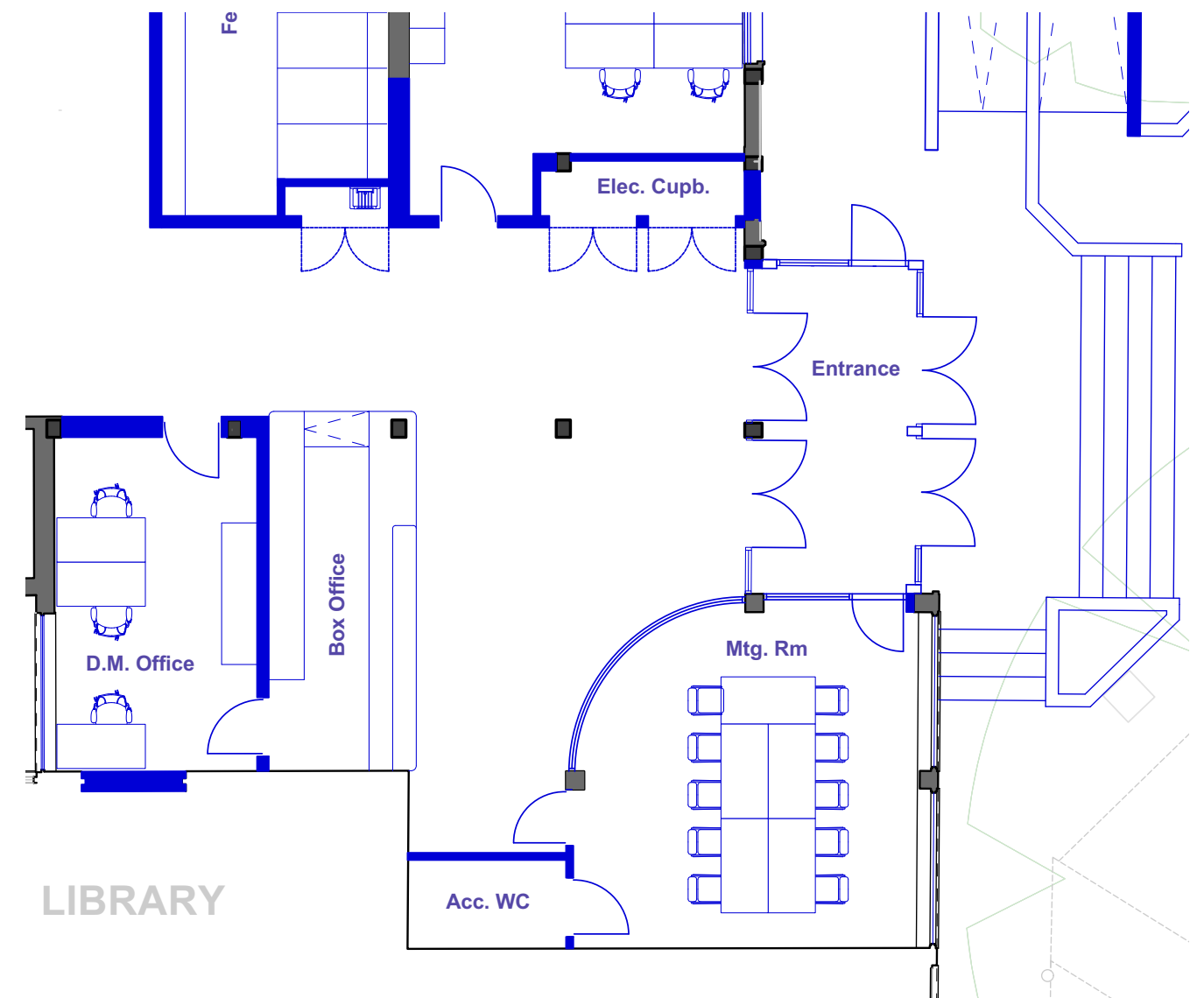
Entrance area options

Entrance area options - can apply to any of the options: 1A, 1B or 1C

Open seating /cafe area



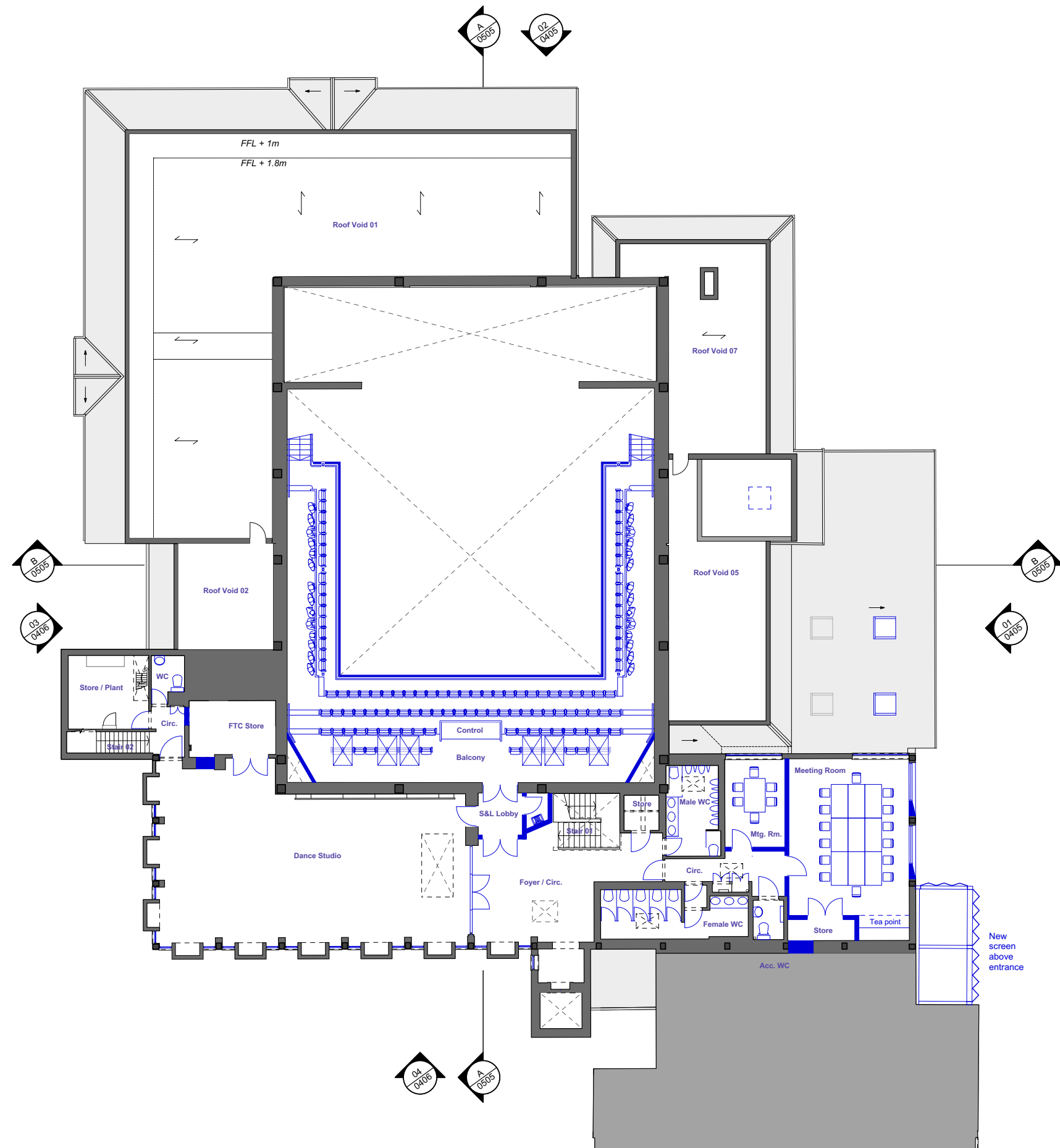
Glazed 10-person meeting room with independent access



Retained FOH stair

First floor - Option 1A

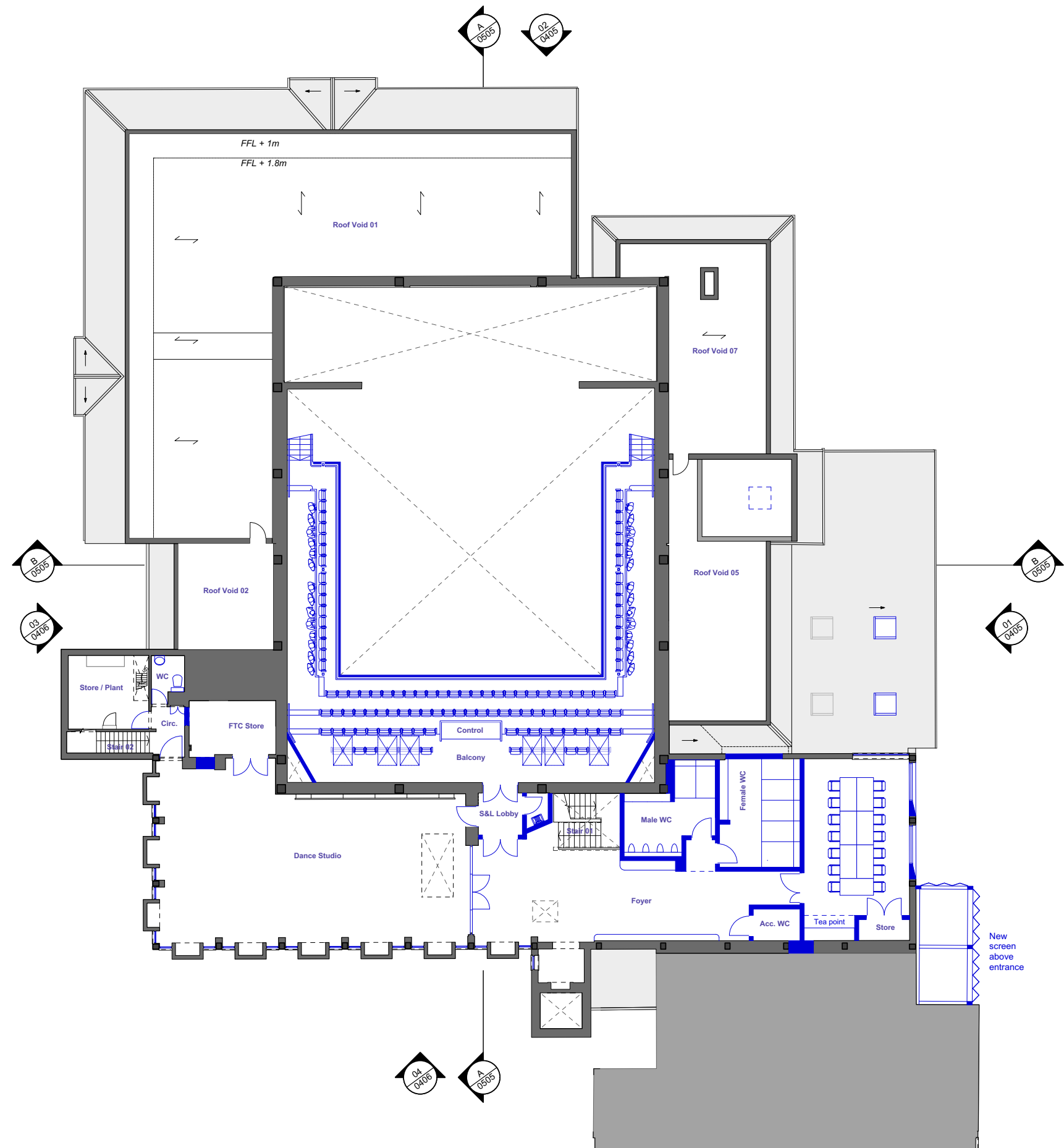
- Lowest cost option as first floor toilets are not reconfigured - just refurbished. The sizes of the cubicles etc. are smaller than current standards.
- The amount of foyer space at this level is very limited in this option.
- New wraparound balcony is introduced in the auditorium.
- Stage house technical gallery is not included (TBC).
- Works to Gurkha Square facade are included. The front portion of the hipped roof is removed.



Retained FOH stair

First floor - Option 1B

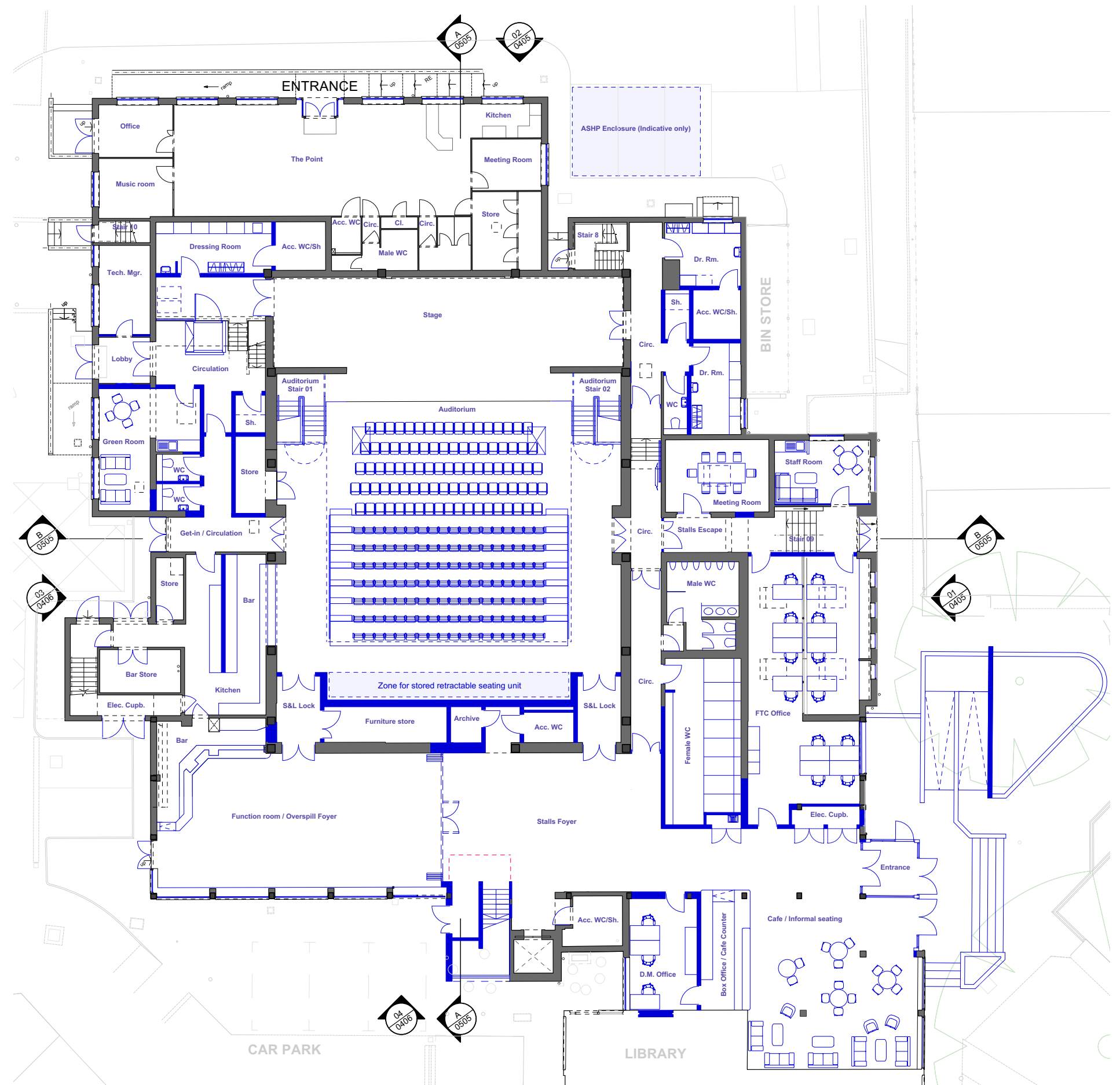
- First floor toilets are reconfigured to give additional foyer space. The toilets themselves are also more spacious.
- The reworking of the toilets results in a slightly smaller meeting room compared to Version A of the first floor.
- New wraparound balcony is introduced in the auditorium.
- Stage house technical gallery is not included (TBC).
- Works to Gurkha Square facade are included. The front portion of the hipped roof is removed.



Relocated FOH stair

Ground floor - Option 1C

- Relocation of the front of house stair frees up foyer space at ground and first floor level. Both accessible WCs can be retained at ground floor level.
- Additional female WCs are introduced.
- Staff office remains split level.
- Get-in arrangement remains as existing. Lifting platform in front of the stage could be included (not currently shown).
- Remodelled entrance, Gurkha Square facade works and localised landscaping. Compliant entrance ramp provided.



Relocated FOH stair

First floor - Option 1C

- FOH stair relocated and FOH WCs reconfigured to maximise the size of the foyer and the meeting room.
- Opportunity to open up the meeting room as part of the foyer (although this would rely upon storing meeting furniture in the Dance Studio store).
- New wraparound balcony is introduced in the auditorium.
- Stage house technical gallery is not included (TBC).
- Works to Gurkha Square facade are included. The front portion of the hipped roof is removed.

